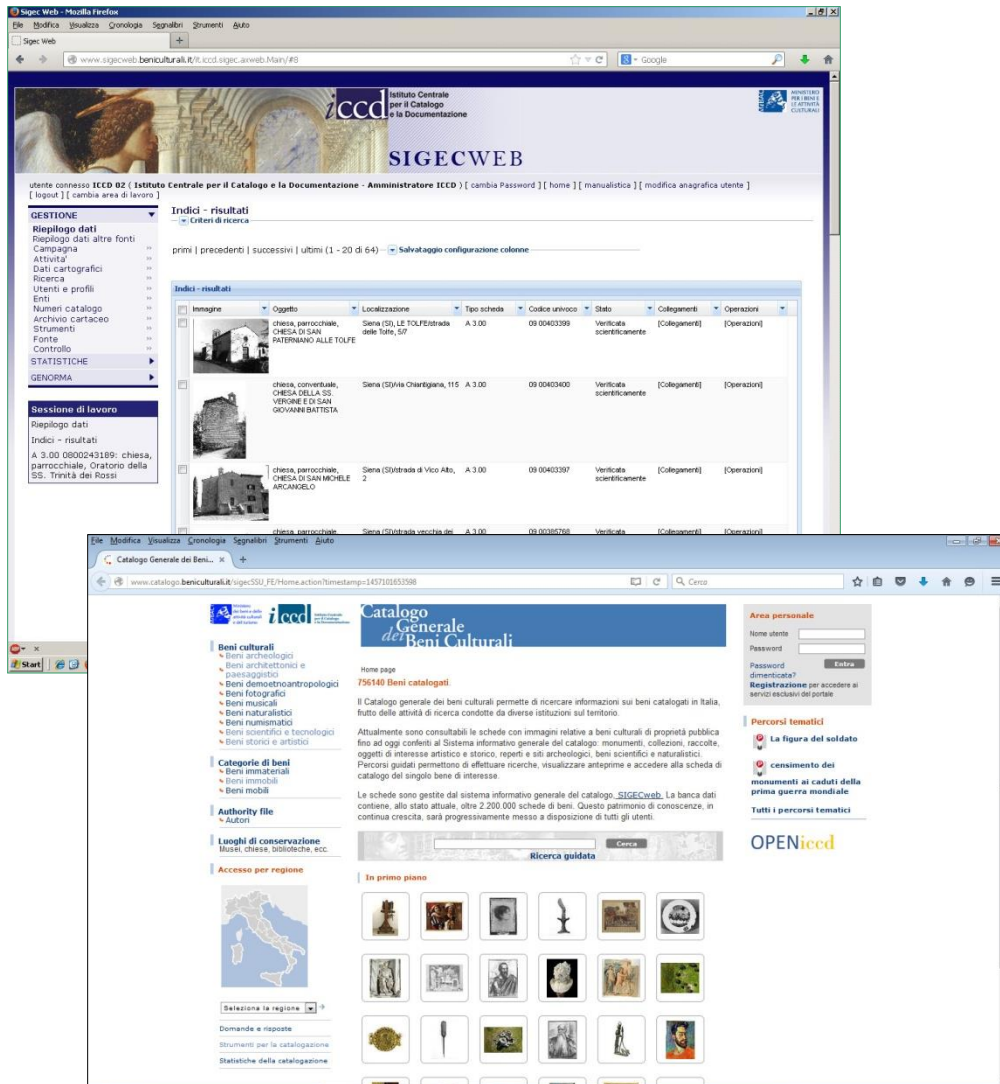


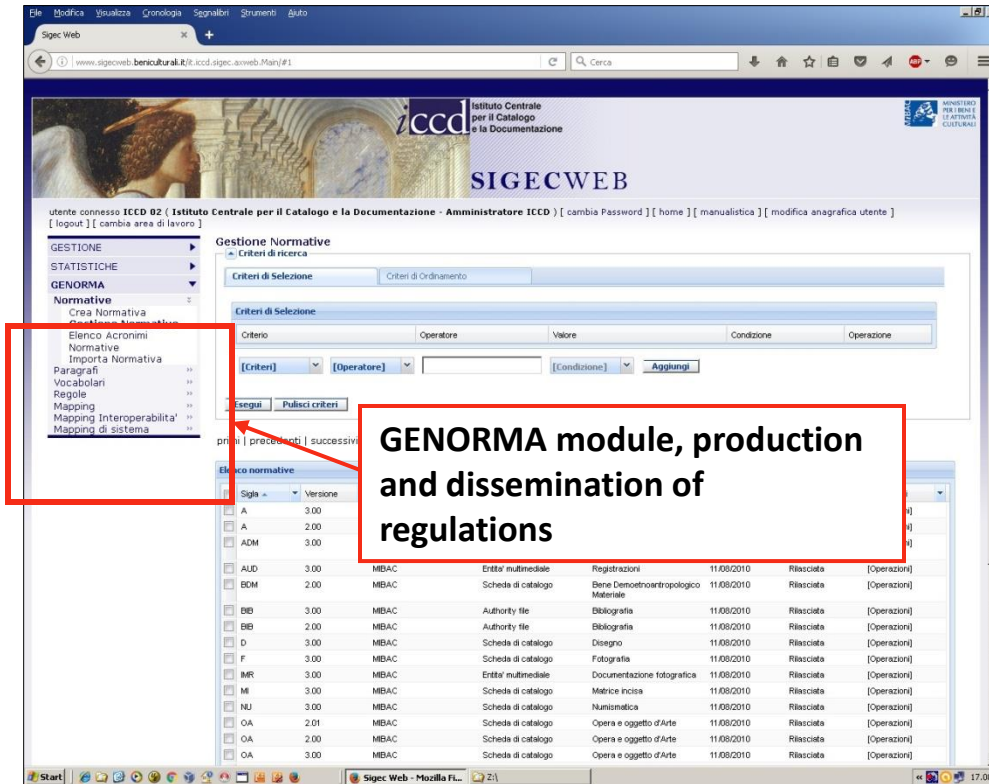
- Methodologies for cataloguing cultural heritage
- Computerized cataloguing and multimedia documentation

Instruments and procedures for geographic information management



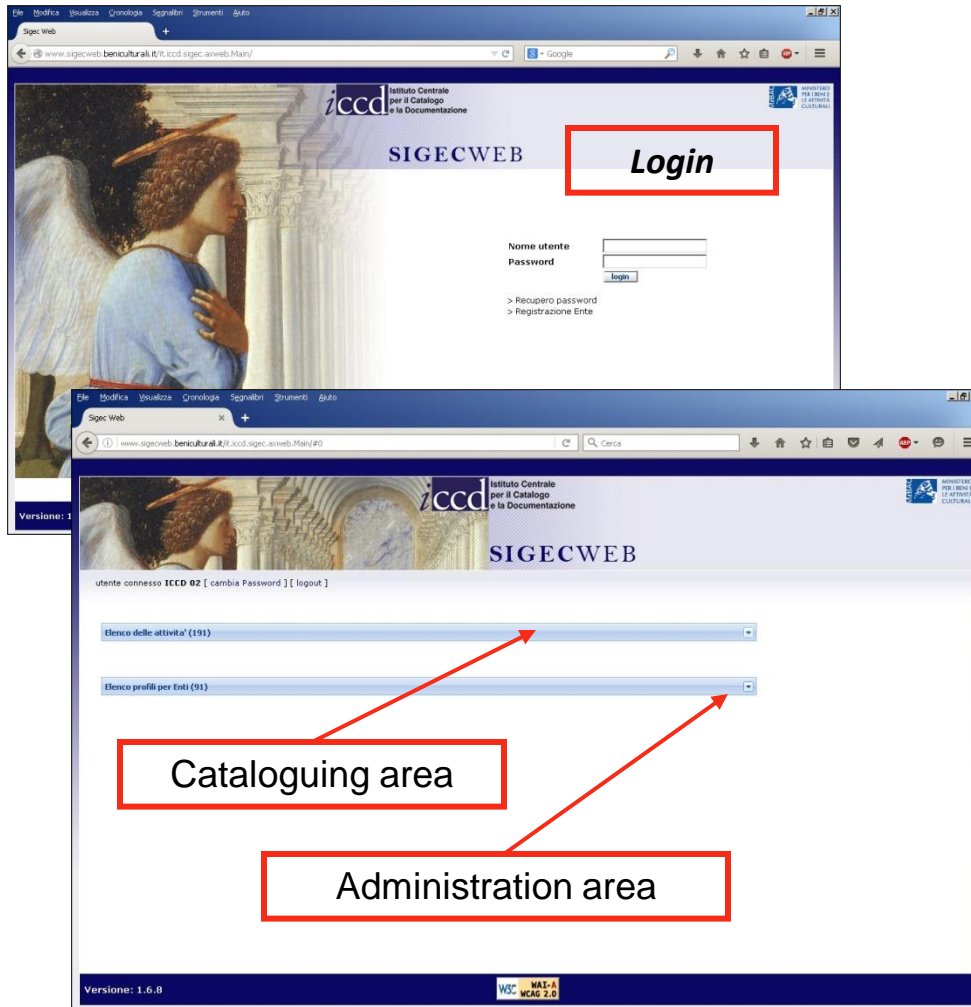
SIGEC (the General Catalogue Information System) is the ICCD instrument for the management and control of the entire cataloguing process. The system is composed of two main conceptual and functional environments:

- for production and management of catalogue records (*operational subsystem*)
- for public use of the catalogue (*user subsystem*).



The entry into operation of the new **SIGECweb** (computerised, Internet-based system) brings about some changes:


- improved operational control and procedural flows;
- options for real-time publication of new norms, and updating of functions for creation and revision of the knowledge on cultural heritage.



SIGECweb is accessed through any web browser, without requiring specific hardware or software.

The system is developed in consideration of the functions required by the different agencies and specialists involved in cataloguing.

SIGECweb permits creation of working environments responding to different operational needs, within the two overall areas of **cataloguing** and **administration**.



utente connesso ICCD 01 (Istituto Centrale per il Catalogo e la Documentazione - Amministratore ICCD) [cambia Password] [home] [m] [logout] [cambia area di lavoro]

GESTIONE
 Riepilogo dati
 Riepilogo dati con altre fonti
 Campagna
 Attivita'
 Dati cartografici
 Ricerca
 Utenti e profili
 Enti
 Numeri catalogo
 Archivio cartaceo
 Strumenti
 Fonte
 Controllo
 STATISTICHE
 GENORMA

Sessione di lavoro
 Riepilogo dati
 Indici - risultati

A 3.00 0900494741: chiesa, parrocchiale, CHIESA DI SANTA PETRONILLA

CD - CODICI	
TSK - Tipo scheda	A
LIR - Livello ricerca	I
NCT - CODICE UNIVOCO	
NCTR - Codice regione	09
NCTN - Numero catalogo generale	00494741
ESC - Ente schedatore	S60
ECP - Ente competente	S60
OG - OGGETTO	
OGT - OGGETTO	
OGTD - Definizione tipologica	chiesa
OGTQ - Qualificazione	parrocchiale
OGTN - Denominazione	CHIESA DI SANTA PETR
OGA - ALTRA DENOMINAZIONE	
OGAG - Genere denominazione	originaria
OGAD - Denominazione	Chiesa del convento dei
LC - LOCALIZZAZIONE GEOGRAFICO-AMMINISTRATIVA	
PVC - LOCALIZZAZIONE GEOGRAFICO-AMMINISTRATIVA	
PVCS - Stato	ITALIA
PVCR - Regione	Toscana
PVCP - Provincia	SI
PVCC - Comune	Siena
PVCL - Localita'	SIENA
PVCI - Indirizzo	viale C.B. di Cavour, 20
PVCA	via Santa Petronilla
PVCA	via Santa Petronilla
CST - CENTRO STORICO	
CSTN - Numero d'ordine	01
CSTD - Denominazione	Siena
CSTA	capoluogo municipale
SET - ZONA URBANA	
SETT - Tipo	SU
CS - LOCALIZZAZIONE CATASTALE	
CTL - Tipo di localizzazione	localizzazione fisica
CIS - LOCALIZZAZIONE CATASTALE	
CTSC - Comune	Siena
CTSF - Foglio/Data	40/1959
CTSN - Particelle	A/93
CTSP - Proprietari	Ente religioso cattol
CTSE - Particelle ed altri elementi di confine	particelle 89/90
LS - LOCALIZZAZIONE STORICA	
LST - Tipo di localizzazione	localizzazione fisica
CSS - LOCALIZZAZIONE CATASTALE STORICA	
CSSD - Denominazione e tipologia del catasto	Catasto Leopoldini
CSSF	fg. 17,23,8; c. 117
CSSN - Particelle	senza particella
C SST - Data	1825 ca.
GP - GEOREFERENZIAZIONE TRAMITE PUNTO	
GPL - Tipo di localizzazione	localizzazione fisica
GPD - DESCRIZIONE DEL PUNTO	
GDP - PUNTO	
GDPX - Coordinata X	11.321151441
GDPY - Coordinata Y	43.329525483
GPM - Metodo di georeferenziazione	punto approssimat

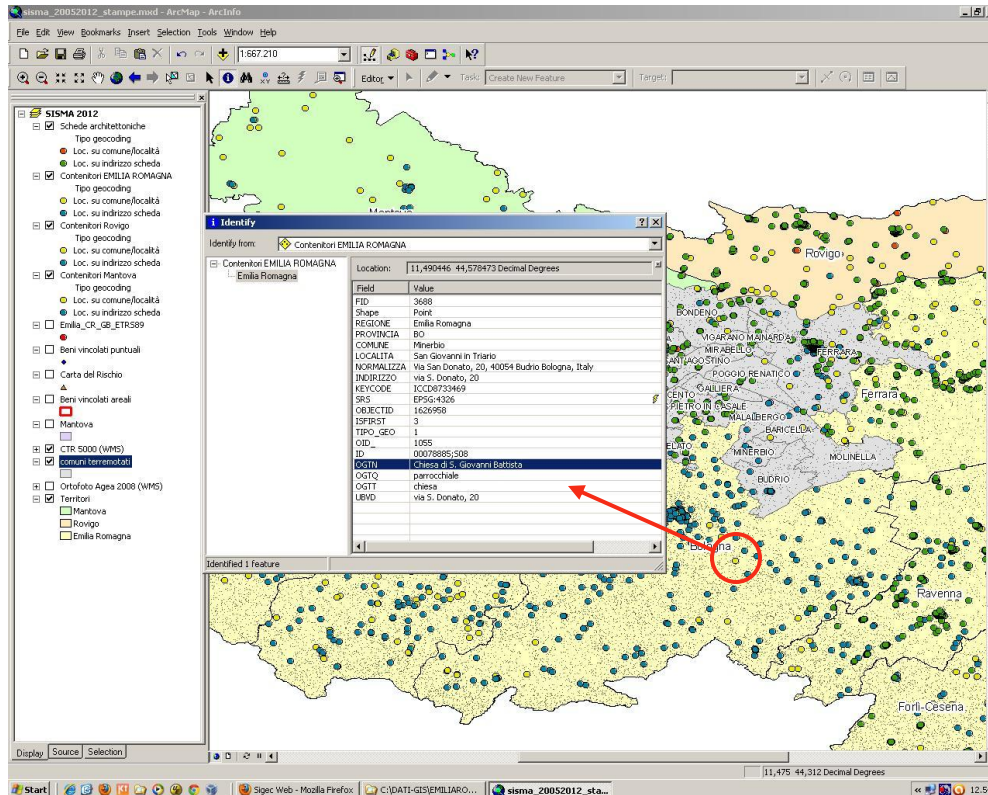
Visualizzazione dei dati multimediali (totale 1) della scheda 494741/f1



Visualizzazione dei dati multimediali (totale 1) della scheda 494741 catastale




The system is capable of integrating all data on a property in a single context, thus “reconstructing” the knowledge of the original unit of heritage.



One of the great assets of a **computerised system** is the capacity for inter-relation of information and the synthesis of knowledge.

The understanding of the quantities and qualities of the national heritage requires information on the location of the properties within the territory, and their relations within this context.

Geo-referencing of cultural properties is a powerful tool in this regard.

The screenshot displays the SIGECWEB interface in a Mozilla Firefox browser. The main window shows a search result for 'ISTITUTO SANTA TERESA' with the following details:

Immagine	Denominazione	Tipo scheda	Codice regione	Codice contenitore	Localizzazione	Collegamenti	Operazioni
	ISTITUTO SANTA TERESA	CF1.00	09	@00403327@	ITALIA Toscana SI Siena Via di S. Quirico, 34/36	[Collegamenti]	[Operazioni]

Below this, a 'Collegamenti' dropdown menu is open, showing 'Schede collegate (9)'. A red arrow points from this menu to a larger, detailed view of the search results below.

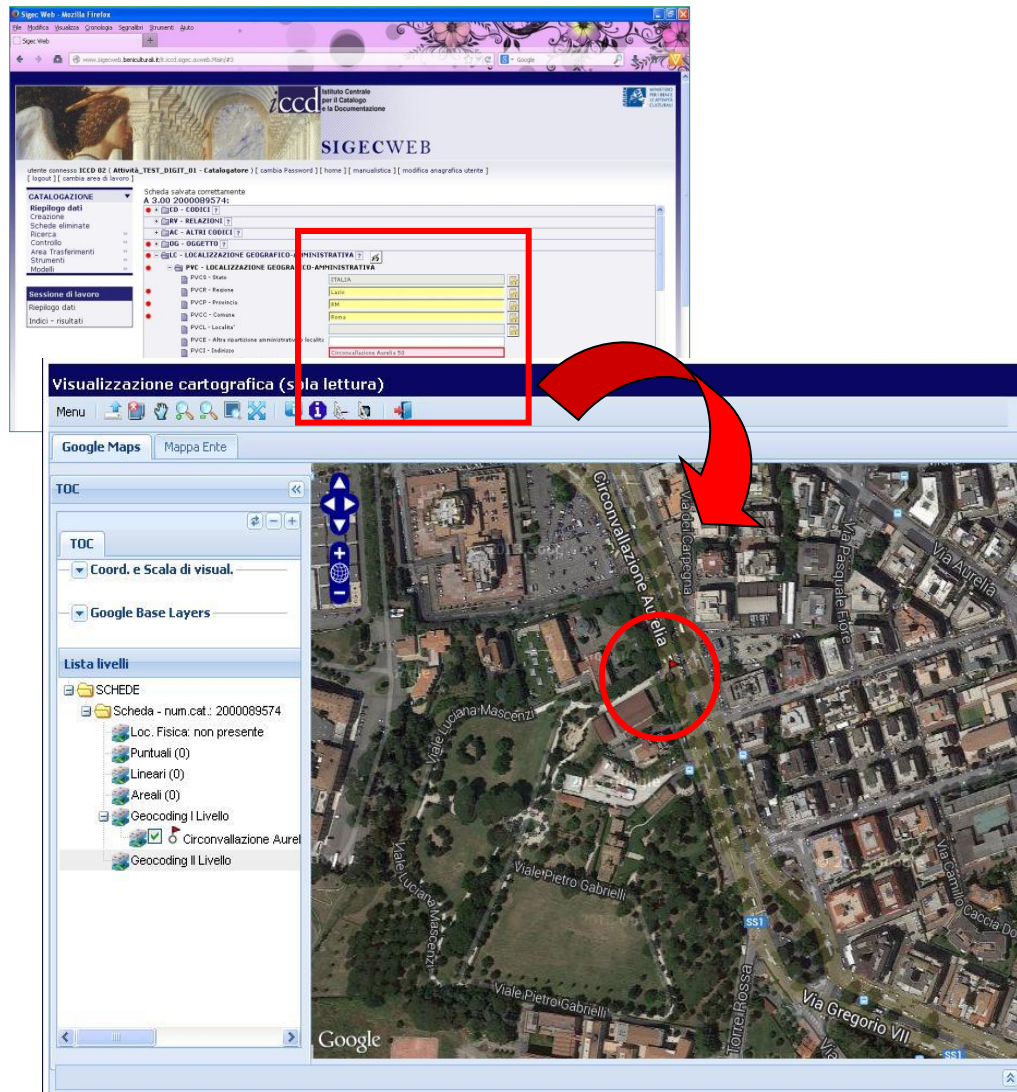
The detailed view shows a list of properties with columns for 'Immagine', 'Oggetto', 'Localizzazione', 'Tipo scheda', 'Codice univoco', 'Stato', 'Collegamenti', and 'Operazioni'. The list includes:

- oratorio, di confraternita, ORATORIO DELLA COMPAGNIA DI SANTA CATERINA DELLA NOTTE
- capella, CAPPELLA DEL MADONNINO DELL'OSPEDALE DI SANTA MARIA DELLA SCALA
- pelegrinaggio, PELLEGRINAGGIO DELL'OSPEDALE DI SANTA MARIA DELLA SCALA
- ex cappella, EX CAPPELLA DELLE FANCIULLE DELL'OSPEDALE DI SANTA MARIA DELLA SCALA
- oratorio, di confraternita, ORATORIO DELLA SOCIETA' DI ESECUTORI DI RE DISPOSIZIONI NELL'OSPEDALE
- capella, CAPPELLA DELLA MADONNA DELL'OSPEDALE DI SANTA MARIA DELLA SCALA
- sagraeria, SAORESTIA GRANDE DELLA CHIESA DELL'ANNUNZIATA O S.

The positions of both *immovable* and *movable properties* (e.g. architecture, archaeological areas and structures *versus* historic-artistic, archaeological objects) can be recorded.

The properties can also understood in reference to their “containers” (e.g. museums, monuments, sites, churches, storage reserves).

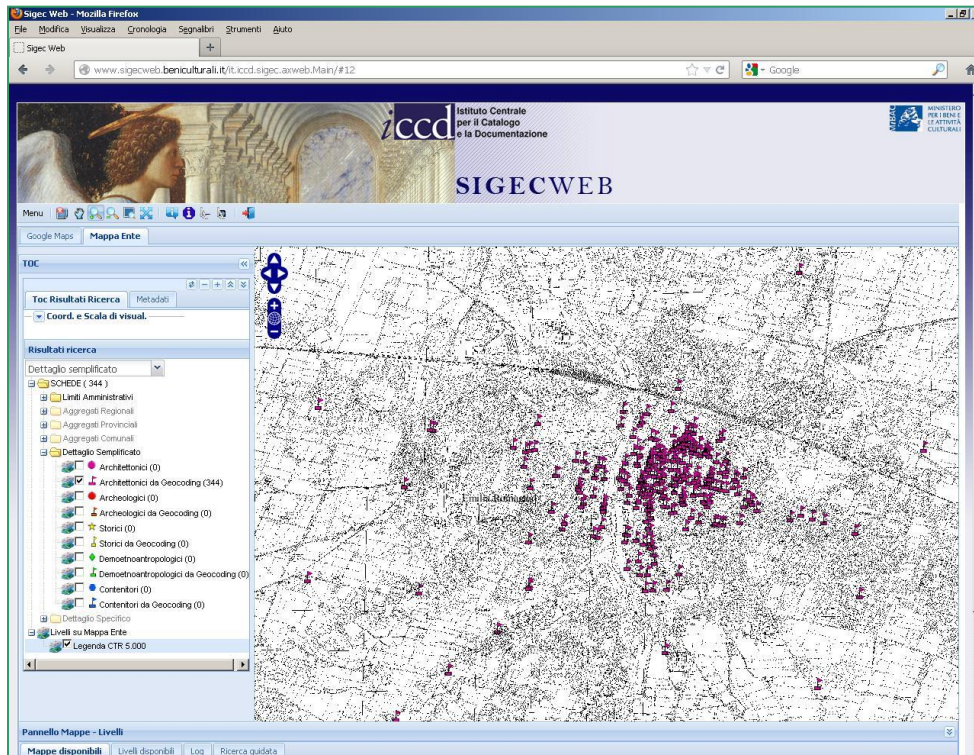
The **SIGECweb**: system includes specific functions for representing and sharing all such geographic data on properties.



SIGECweb includes enormous quantities of data from previous cataloguing, without geographic data.

The system is thus designed with **automatic functions** to acquire the information, for example from the data on location within the Italian administrative divisions.

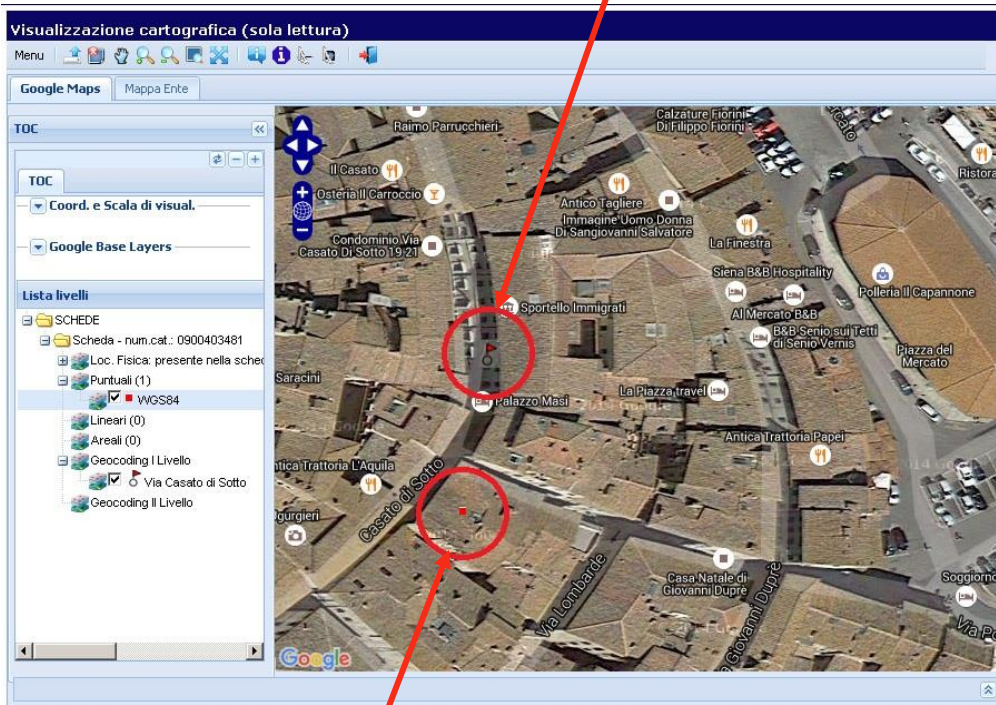
In this way the system can obtain mapping even for the “incomplete” records.



The system automatically translates (geo-codifies) the address found in a catalogue sheet in terms of X and Y (longitude/latitude) geographic coordinates.

The information is memorised as metadata, permitting even the representation of properties lacking precise georeferencing.

Geo-coding from a street address

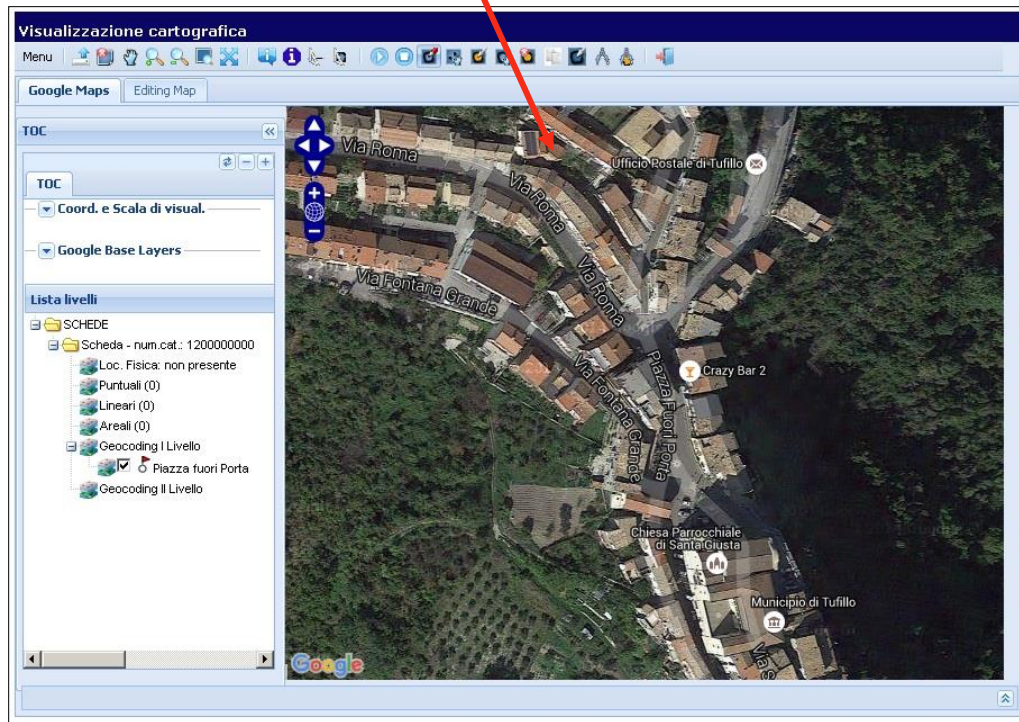


Detailed geo-referencing

The precision of the geo-referencing depends on the data included in the catalogue record.

Even at the most basic level, the geographic localisation is still useful, and can be further refined by the insertion of further data.

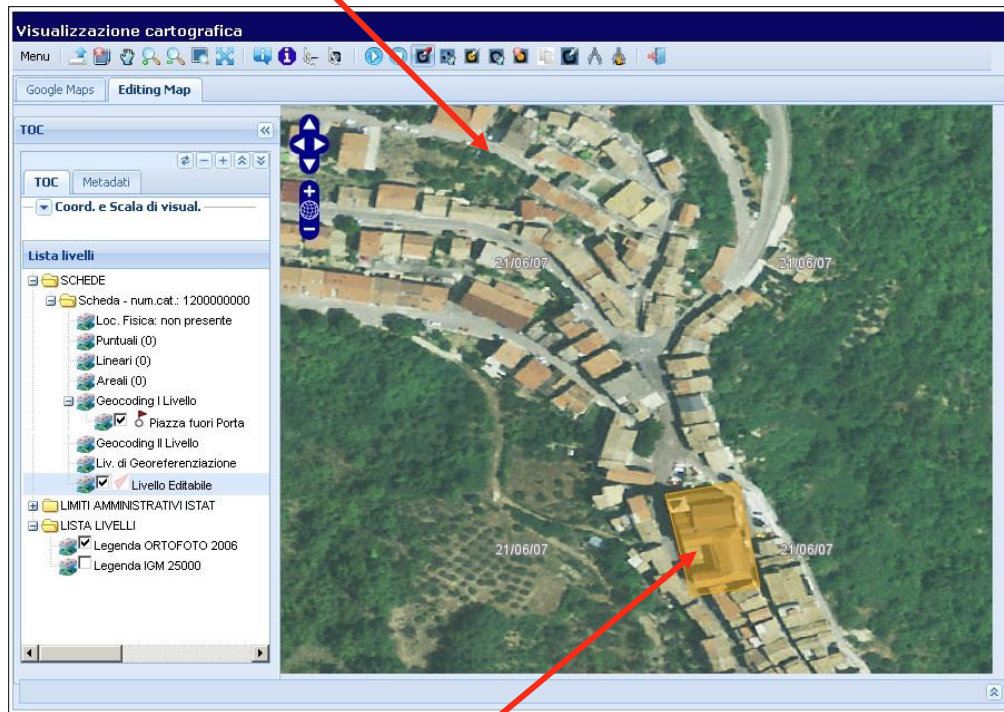
Navigation in Google Maps



The SIGECweb system permits rapid navigation in Google maps, then acquisition of geo-referencing using the Web Map Service protocol (WMS) protocol, visualised through cartographic interoperability, in keeping with the Open Geospatial Consortium (OGC) standards.

The spatial reference system (SRS) for the SIGECweb cartographic module is World Geodetic System 1984 (WGS84).

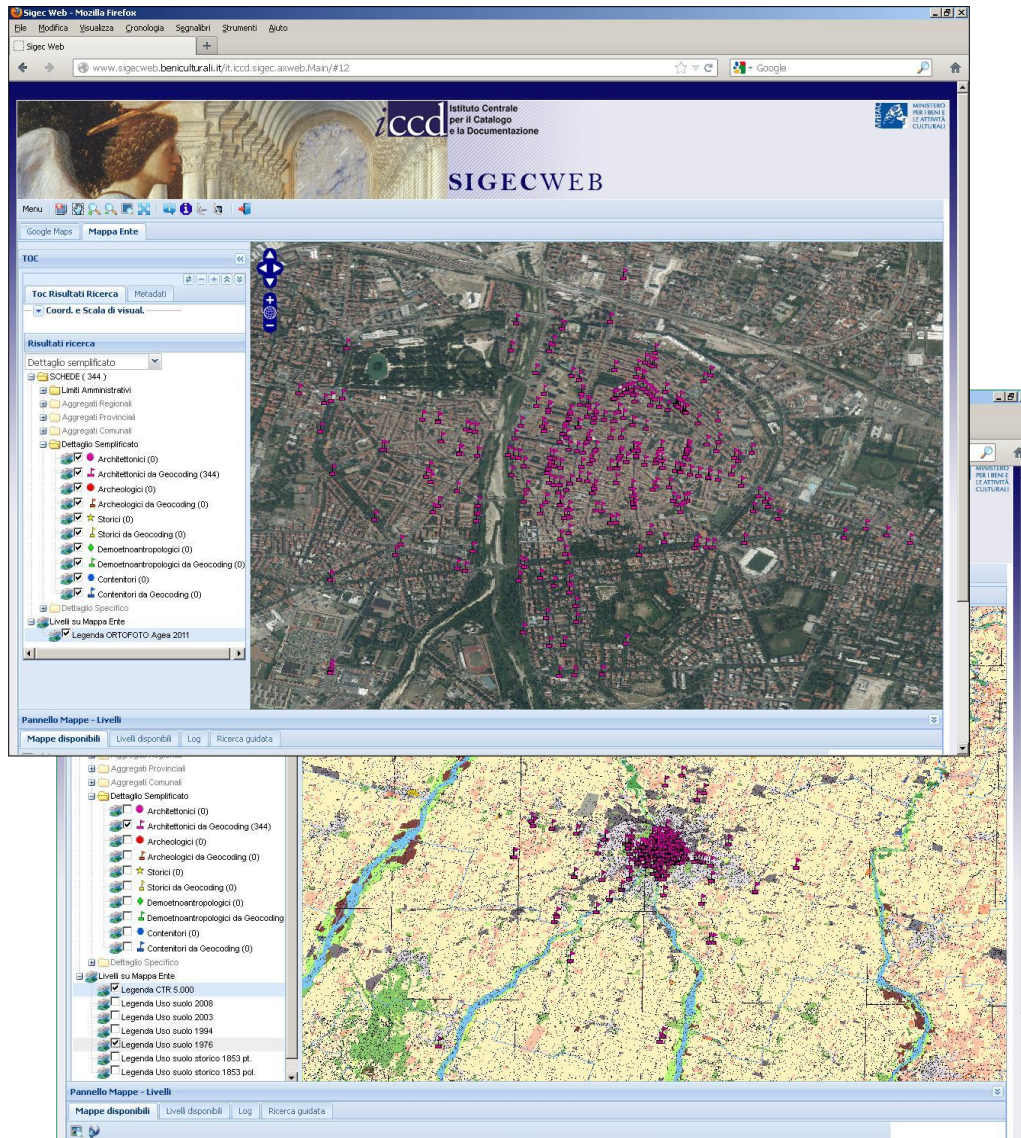
Editing interface



Drawing of an area

SIGECweb includes an interface with a web-based geographic information system (GIS), offering simple instruments that guide the cataloguer in drawing the property (points, lines, areas) on a cartographic base.

The drawing is then automatically related to the catalogue sheet, based on the vertical coordinates indicated through the drawing and information on the base spatial reference system.



The mapping of properties throughout the territory is exceptionally useful in research and management for the national heritage.

For example, the national catalogue can now serve in the computerised preparation of summary thematic maps, permitting ready perception of the distribution and quantities of heritage properties, leading to further lines of detailed study.