

- Methodologies for cataloguing cultural heritage
- Computerized cataloguing and multimedia documentation

## **Cataloguing of architectural and landscaping heritage: an overview**

# Cataloguing cultural heritage

## **WHAT IS CATALOGUING**

consists in the classification, description and registration of a cultural heritage.

## **WHO CATALOGS**

superintendences, public entities, diocese, etc.

## **WHAT TO CATALOG**

the cultural heritage

## **HOW TO CATALOG**

according to defined standards (homogeneous) criteria)

## ***WHY TO CATALOG***

*to know the cultural heritage for the purpose of protection and enhancement*

Cataloguing is to systematically collect data and information about the cultural heritage that is a classification, description, registration of a cultural asset.

## **CATALOGUE ≠ INVENTORY**

INVENTORY: listing objects or documents (registry)

CATALOGUE: ordered numbering of multiple objects

The discriminant is the ORDER that can be topographic, chronological, typological, etc.

The cataloguing activity consists in planning and organizing ways to:

- Locate the heritage
- Recognize the heritage
  - ✓ In its physical value
  - ✓ In its historical value.
- Gather knowledge on the heritage
- Fill in the information collected by general priority criteria (catalogue norm)

## **L. 1089/1939**

*OBJECT: things of historical interest*

*INTENT: preservation of things of historical interest with attention to restriction regime*

## **Hague Convention of 1954**

*OBJECT: cultural heritage*

*INTENT Protection of Cultural Property in the Event of Armed Conflict*

## **Dlgs. 42/2004**

### **Codice dei Beni Culturali e del Paesaggio**

*OBJECT: : cultural heritage*

*INTENT : preservation, use and promotion of cultural heritage*

The subject of cataloguing is the cultural heritage that over the years has had different terminologies and meanings. At the beginning “things of historical interest”, with attention to restriction regime, were the object of the law; then “cultural heritage” was.

The cultural heritage in its modern meaning encloses an immaterial value for what it represents, because it is the historical testimony of human activity and creativity: through the cultural heritage, one identifies and qualifies the peculiarities of a nation

The cultural heritage has to be:

- preserved
- protected
- managed
- benefited



the CATALOG is the instrument to preserve and manage cultural heritage

Cataloguing is thus defined as a  
CULTURAL FACT-FINDING OPERATION  
essential for every asset protection act

D. Lgs. 22 gennaio 2004, n. 42

## **CODICE DEI BENI CULTURALI E DEL PAESAGGIO,**

ai sensi dell'art. 10 della legge 6 luglio 2002, n.137

così come modificato dal D. Lgs. 24 marzo 2006, n. 156 e D. Lgs. 24 marzo 2006, n. 157  
nonché dal D. Lgs. 26 marzo 2008, n. 62 e D. Lgs. 26 marzo 2008, n. 63

### **Articolo 17. (Catalogazione)**

- 1. Il Ministero, con il concorso delle regioni e degli altri enti pubblici territoriali, assicura la catalogazione dei beni culturali e coordina le relative attività*
- 2. Le procedure e le modalità di catalogazione sono stabilite con decreto ministeriale. A tal fine il Ministero, con il concorso delle regioni, individua e definisce metodologie comuni di raccolta, scambio, accesso ed elaborazione dei dati a livello nazionale e di integrazione in rete delle banche dati dello Stato, delle regioni e degli altri enti pubblici territoriali.*
- 3. Il Ministero e le regioni, anche con la collaborazione delle università, concorrono alla definizione di programmi concernenti studi, ricerche ed iniziative scientifiche in tema di metodologie di catalogazione e inventariazione.*
- 4. Il Ministero, le regioni e gli altri enti pubblici territoriali, con le modalità di cui al decreto ministeriale previsto al comma 2, curano la catalogazione dei beni culturali loro appartenenti e, previa intese con gli enti proprietari, degli altri beni culturali.*
- 5. I dati di cui al presente Articolo affluiscono al catalogo nazionale dei beni culturali in ogni sua articolazione.*
- 6. La consultazione dei dati concernenti le dichiarazioni emesse ai sensi dell'Articolo 13 è disciplinata in modo da garantire la sicurezza dei beni e la tutela della riservatezza*

On the **Codice dei beni culturali e del paesaggio** (D. Lgs. 42/2004 e s.m.i. - art. 17) the beginning of TITLE I, dedicated to protection, refers to cataloguing as a fact-finding stage, essential for the proper management and preservation of cultural heritage.



Cataloguing is an necessary tool to get the proper knowledge of cultural heritage and to lay the foundation for heritage safeguarding and for conservative interventions.



Cataloguing is a PUBLIC SERVICE

In addition to the location and legal status data, it is crucial to record all physical, material, historical and artistic features that characterize a cultural property.

The cataloguing has overcome its binding nature and has become an activity to show the complexity of cultural heritage and to transfer and preserve its values and meanings.

In short:

**A catalogue sheet has two functions:**

- **to report the heritage;**
- **to have the information to promote and guide any conservation act, even if in a preliminary phase.**

# Catalogue Sheets

*ARCHITETTONICO E PAESAGGISTICO*



*ARCHEOLOGICO*



*STORICO ARTISTICO*



*ETNOANTROPOLOGICO*



The ICCD standards for cataloguing of properties follow organisational structure (the following AREAS OF HERITAGE MANAGEMENT):

- Architectural and landscape
- Archaeological
- Historical-artistic
- Ethno-anthropological

SIGLA	DEFINIZIONE
<b>A</b>	Architettura
<b>AT</b>	Reperti antropologici
<b>BDI</b>	Beni demotnoantropologici immateriali
<b>BDM</b>	Beni demotnoantropologici materiali
<b>BNB</b>	Beni naturalistici-Botanica
<b>BNM</b>	Beni naturalistici-Mineralogia
<b>BNP</b>	Beni naturalistici-Paleontologia
<b>BNPE</b>	Beni naturalistici-Petrologia
<b>BNPL</b>	Beni naturalistici-Planetologia
<b>BNZ</b>	Beni naturalistici-Zoologia
<b>CA</b>	Complessi archeologici
<b>CNS</b>	Centri/nuclei storici
<b>D</b>	Disegni
<b>F</b>	Fotografia
<b>FF</b>	Fondi fotografici
<b>MA</b>	Monumenti archeologici
<b>MI</b>	Matrici incise
<b>NU</b>	Beni numismatici
<b>OA</b>	Opere/oggetti d'arte
<b>OAC</b>	Opere/oggetti d'arte contemporanea
<b>PG</b>	Parchi/giardini
<b>PST</b>	Patrimonio scientifico e tecnologico
<b>RA</b>	Reperti archeologici
<b>S</b>	Stampe
<b>SAS</b>	Saggi stratigrafici
<b>SI</b>	Siti archeologici
<b>SM</b>	Strumenti musicali
<b>SMO</b>	Strumenti musicali-Organo
<b>TMA</b>	Tabella materiali archeologici
<b>VeAC</b>	Vestimenti antichi/contemporanei

Various TYPES of cataloguing norms are continuously implemented by MIBACT, depending on the different types of cultural properties, with the aim of collecting information about the cultural property in a synthetic and ordered way.

## MIBACT AREAS OF HERITAGE MANAGEMENT

Archaeological  
**Architectural and landscape**  
 Ethno-anthropological  
 Historic-artistic

## CATEGORIES

Movable properties  
**Immovable properties**  
 Intangible heritage

## DISCIPLINARY SECTORS

Archeological heritage  
**Architectural and landscape heritage**  
 Demo-ethno-anthropological heritage  
 Photographic heritage  
 Music heritage  
 Natural heritage  
 Numismatic heritage  
 Scientific and technological heritage  
 Historic and artistic properties

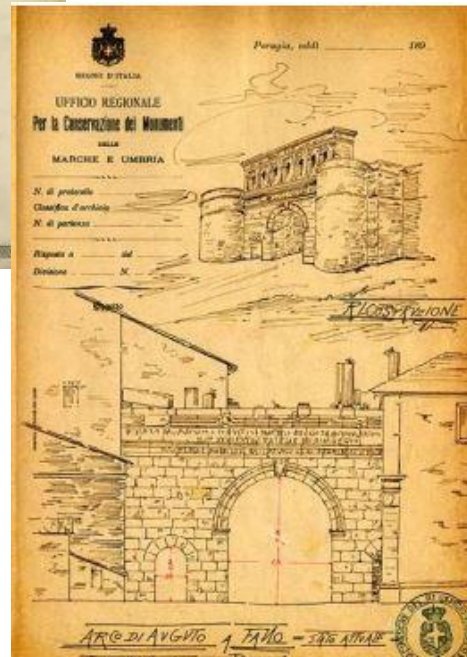
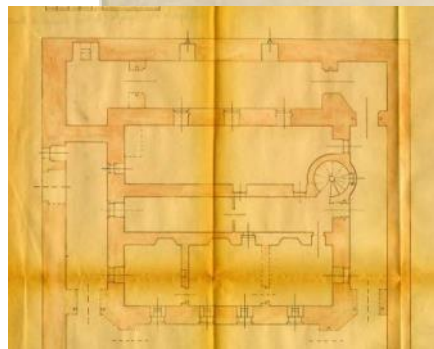
## TYPES (N. 30)

**A Architecture**  
 AT Anthropological materials,  
 BDI Intangible demo-ethno-anthropological heritage  
 ...  
**PG Parks and Gardens**  
 ....  
 Etc.

The current status of the tools, available for cataloguing the architectural and landscape heritage, is articulated as follows:

- **A norm** to catalogue ARCHITECTURES
- **PG norm** to catalogue PARKS and GARDENS.

*The **SU norm**, for Urban Sectors cataloguing, exists only in paper sheets, since is still an unpublished regulation in SIGECweb .*



The rules for cataloguing architectural and landscaping heritage, as defined today, is the result of many years of studies, elaborations and cataloguing experience, started in Italy **since the end of the nineteenth century.**

The first catalogue norms on monuments and works of archaeological and artistic interest were only in paper version and had a "descriptive" approach.





## Scheda



### CD - CODICI

TSK - Tipo scheda	A
LIR - Livello ricerca	I
NCT - CODICE UNIVOCO	
NCTR - Codice regione	07
NCTN - Numero catalogo generale	00108214
ESC - Ente schedatore	S20
ECP - Ente competente	S20

### OG - OGGETTO

OGT - OGGETTO	
OGTD - Definizione tipologica	palazzo
OGTQ - Qualificazione	nobiliare
OGTN - Denominazione	Palazzo già Pallavicino poi Reyper

paragraphs

The SIGECweb catalogue norm collects information on the heritage by «guiding» the cataloguer through the compilation of various information sections called **paragraphs**, dedicated to topics such as history, location, and so on.

Each paragraph is composed by **fields** and/or **sub-fields**.

Some paragraphs are repeatable.

As for the other catalogue record, the following types of information are registered and organized in the A and PG sheets:

- **administrative information**  
of the cultural property
  
- **descriptive and technical scientific information**  
which points out the value of the heritage
  - **geographical information**  
which locates the heritage on the territory
  
  - **information about documentation**  
related to the catalogued cultural property

Each norm contains **mandatory** items, whose compilation is considered essential for knowledge of the heritage. Other elements, however, are **optional** and are compiled depending on the different situations to be documented.

**I - INVENTORY level**

Only mandatory items are compiled

**P – PRECATALOG level**

Optional elements are compiled depending on the degree of depth of the research

**C – CATALOG level**

DISCIPLINARY SECTOR ARCHITECTURAL AND LANDSCAPE HERITAGE

**A sheet - Architecture**

**AREA OF HERITAGE MANAGEMENT**

Architectural and landscape

**CATEGORY**

Immovable property

**DISCIPLINARY SECTOR**

Architectural and landscape heritage

**TYPE**

A - Architecture

This standard is used for cataloguing:

- Monumental complexes
  - Public buildings
  - religious buildings
  - Noble residences
  - Fortified architectures
- +
- Private buildings
  - rural constructions
  - buildings of industrial archaeology characterized by particular historical artistic significance.

*In general, we use A sheet to catalogue complexes, buildings and artefacts before the High Middle Age.*

**religious buildings**



residential architecture



**memorial architecture**





**rural constructions**



**Infrastructure**



**Infrastructure**



**fortified architectures**



**CD** IDENTIFIERS  
**RV** REALTIONS  
**AC** OTHER IDENTIFIERS  
**OG** OBJECT  
**LC** GEOGRAPHIC-ADMINISTRATIVE LOCATION  
**CS** CADASTRAL LOCATION  
**LS** HISTORICAL LOCATION  
**GP** GEOREFERENCING BY POINT  
**GL** GEOREFERENCING BY LINE  
**GA** GEOREFERENCING BY AREA  
**AU** CULTURAL DEFINITION  
**RE** HISTORICAL INFORMATION  
**SI** SPACES  
**IS** STRUCTURAL SYSTEM  
**PN** PLAN  
**FN** FOUNDATIONS  
**SV** VERTICAL STRUCTURES  
**SO** HORIZONTAL STRUCTURES  
**CP** ROOFING  
**SC** STAIRWAYS  
**PV** FLOORS AND FLOORING  
**DE** DECORATIVE ELEMENTS  
**LI** INSCRIPTIONS, PLAQUES, ARMS  
**CO** CONSERVATION  
**RS** RESTORATIONS  
**US** USE  
**TU** LEGAL STATUS AND RESTRICTIONS  
**DO** REFERENCE SOURCES AND DOCUMENTS  
**AD** DATA ACCESS  
**CM** COMPILATION  
**AN** NOTES

The tab is divided into paragraphs:

- Some paragraphs are common to other norms
- Other paragraphs are specific to the description of the architecture.

The description of the architectural heritage is organised into:

- **unit** (areas)
- **functional partitions** (walls, roofs, floors, etc.) located in the monument

* +	CD - CODICI ?
+	RV - RELAZIONI ?
+	AC - ALTRI CODICI ?
* +	OG - OGGETTO ?
* +	LC - LOCALIZZAZIONE GEOGRAFICO-AMMINISTRATIVA ?
* +	CS - LOCALIZZAZIONE CATASTALE ?
+	LS - LOCALIZZAZIONE STORICA ?
+	GP - GEOREFERENZIAMENTO TRAMITE PUNTO ?
+	GL - GEOREFERENZIAMENTO TRAMITE LINEA ?
+	GA - GEOREFERENZIAMENTO TRAMITE AREA ?
* +	AU - DEFINIZIONE CULTURALE ?
* +	RE - NOTIZIE STORICHE ?
+	PE - PREESISTENZE ?
+	SI - SPAZI ?
+	IS - IMPIANTO STRUTTURALE ?
+	PN - PIANTA ?
+	FN - FONDAZIONI ?
+	SV - STRUTTURE VERTICALI ?
+	SO - STRUTTURE DI ORIZZONTAMENTO ?
+	CP - COPERTURE ?
+	SC - SCALE ?
+	PV - PAVIMENTI E PAVIMENTAZIONI ?
+	DE - ELEMENTI DECORATIVI ?
+	LI - ISCRIZIONI, LAPIDI, STEMMI ?
+	CO - CONSERVAZIONE ?
+	RS - RESTAURI ?
+	US - UTILIZZAZIONI ?
* +	TU - CONDIZIONE GIURIDICA E VINCOLI ?
* +	DO - FONTI E DOCUMENTI DI RIFERIMENTO ?
* +	AD - ACCESSO AI DATI ?
* +	CM - COMPILAZIONE ?
+	AN - ANNOTAZIONI ?

## CD IDENTIFIERS

RV RELATIONS

AC OTHER IDENTIFIERS

OG OBJECT

LC GEOGRAPHIC-ADMINISTRATIVE LOCATION

CS CADASTRAL LOCATION

LS HISTORICAL LOCATION

GP GEOREFERENCING BY POINT

GL GEOREFERENCING BY LINE

GA GEOREFERENCING BY AREA

AU CULTURAL DEFINITION

RE HISTORICAL INFORMATION

SI SPACES

IS STRUCTURAL SYSTEM

PN PLAN

FN FOUNDATIONS

SV VERTICAL STRUCTURES

SO HORIZONTAL STRUCTURES

CP ROOFING

SC STAIRWAYS

PV FLOORS AND FLOORING

DE DECORATIVE ELEMENTS

LI INSCRIPTIONS, PLAQUES, ARMS

CO CONSERVATION

RS RESTORATIONS

US USE

TU LEGAL STATUS AND RESTRICTIONS

DO REFERENCE SOURCES AND DOCUMENTS

AD DATA ACCESS

CM COMPILATION

AN NOTES

Acronym	Definition	LUN.	RIP.	OBB.	VOC.	VIS.
<b>CD</b>	<b>CODES</b>			*		
TSK	Sheet type	4		*	C	1
LIR	Search level	5		*	C	1
NCT	UNIQUE IDENTIFYING CODE			*		
	NCTR	Region Code	2		C	1
	NCTN	General catalogue number	8		number assigned by ICCD	1
	NCTS	General catalogue number suffix	2			1
ESC	Cataloguing agency	25		*	code assigned by ICCD	1
ECP	Responsible agency	25		*	code assigned by ICCD	1

## CD - CODICI

<b>TSK - Tipo scheda</b>	A
<b>LIR - Livello ricerca</b>	I
<b>NCT - CODICE UNIVOCO</b>	
<b>NCTR - Codice regione</b>	07
<b>NCTN - Numero catalogo generale</b>	00110614
<b>ESC - Ente schedatore</b>	S20
<b>ECP - Ente competente</b>	S20



## CD - CODICI

<b>TSK - Tipo scheda</b>	A
<b>LIR - Livello ricerca</b>	I
<b>NCT - CODICE UNIVOCO</b>	
<b>NCTR - Codice regione</b>	18
<b>NCTN - Numero catalogo generale</b>	00110614
<b>ESC - Ente schedatore</b>	S178
<b>ECP - Ente competente</b>	S178



Region code

General catalogue number

Within the cataloguing process, this paragraph records the data that identify, at national level, the heritage associated with the norm describing it

Acronym	Definition	LUN.	RIP.	OBB.	VOC.	VIS.
<b>RV</b>	<b>RELATIONS</b>					
RVE	COMPLEX STRUCTURE					
RVEL	Level	25		(*)		1
RVER	Root property code	25				1
RVES	Component property code	25	Yes			1
RSE	DIRECT RELATIONS		Yes			
RSER	Type of relation	70		(*)	C	1
RSET	Sheet type	10		(*)	C	1
RSEC	Property code	25		(*)		3
ROZ	Other relations	25	Yes			3

**RV - RELAZIONI****RSE - RELAZIONI DIRETTE**

**RSER - Tipo relazione** relazione urbanistico ambientale

**RSET - Tipo scheda** A

**RSEC - Codice bene** 0500677904

**RSE - RELAZIONI DIRETTE**

**RSER - Tipo relazione** luogo di collocazione/localizzazione

**RSET - Tipo scheda** OA

**RSEC - Codice bene** 0500222319

**RSE - RELAZIONI DIRETTE**

**RSER - Tipo relazione** luogo di collocazione/localizzazione

**RSET - Tipo scheda** OA

**RSEC - Codice bene** 0500222320

**RSE - RELAZIONI DIRETTE**

**RSER - Tipo relazione** luogo di collocazione/localizzazione

**RSET - Tipo scheda** OA

**RSEC - Codice bene** 0500222321

This paragraph records the information about the relationships between the various parts (the whole property and the component parts) of property, that is identified and described as a complex asset. It describes also the relationships between the property and other listed assets, of the same or different type.





Acronym	Definition	LUN.	RIP.	OBB.	VOC.	VIS.
<b>AC</b>	<b>OTHER CODES</b>					
ACC	Other property code	25	Yes			1
ACS	RELATED CATALOGUE SHEETS		Yes			
ACSE	Agency	25		(*)		1
ACSC	Code	25		(*)		1
ACSS	Specifics	100				1

### A 3.00 1400075771: lavatoio, pubblico, Fonte dei Panni

<b>CD - CODICI</b>	
<b>TSK - Tipo scheda</b>	A
<b>LIR - Livello ricerca</b>	C
<b>NCT - CODICE UNIVOCO</b>	
<b>NCTR - Codice regione</b>	14
<b>NCTN - Numero catalogo generale</b>	00075771
<b>ESC - Ente schedatore</b>	S172
<b>ECP - Ente competente</b>	S172
<b>AC - ALTRI CODICI</b>	
<b>ACS - SCHEDE CORRELATE</b>	
<b>ACSE - Ente</b>	S109
<b>ACSC - Codice</b>	1400071581
<b>ACSS - Specifiche</b>	lavatoio
<b>OG - OGGETTO</b>	
<b>OGT - OGGETTO</b>	
<b>OGTD - Definizione tipologica</b>	lavatoio
<b>OGTQ - Qualificazione</b>	pubblico
<b>OGTN - Denominazione</b>	Fonte dei Panni

The paragraph should be used to record other identifier assigned to the sheet by other agency or to indicate the presence of other types of norms related to the cultural property (eg. restoration norms) contained in databases different from SIGECweb (ACS field).

Acronym		Definition	LUN.	RIP.	OBB.	VOC.	VIS.
<b>OG</b>		<b>OBJECT</b>			*		
	OGT	OBJECT			*		
	OGTD	Type definition	70		*	A	1
	OGTQ	Qualifier	70			A	1
	OGTN	Name	100				1
	OGA	OTHER NAME		Yes			
	OGAG	Name type	50		(*)	C	1
	OGAD	Name	70		(*)		1



The paragraph contains the information to identify the cultural property under examination.

*The compilation of the paragraph is mandatory.*

# A sheet: Paragraph LC GEOGRAPHIC ADMINISTRATIVE LOCATION

Acronym			Definition	LUN.	RIP.	OBB.	VOC.	VIS.
<b>LC</b>			<b>GEOGRAPHIC- ADMINISTRATIVE LOCATION</b>					
	PVC		GEOGRAPHIC- ADMINISTRATIVE LOCATION			*		
		PVCS	Nation	50			C	1
		PVCR	Region	25		*	C	1
		PVCP	Province	3		*	C	1
		PVCC	Municipality	50		*	C	1
		PVCL	Locality	50			C	3
		PVCE	Other administrative subdivision or foreign location	250				3
		PVCI	Address	250				3
		PVCV	Other means of communication	1000				3
		PVCA	Other addresses/facades on public places	1000	Yes			3
	PVL		Other location	250	Yes			3
	PVE		Diocese	50			C	1
	CST		HISTORIC CENTRE					
		CSTN	Order number	3				1
		CSTD	Name	50				3
		CSTA	Administrative structure of historic centre	25			C	1
	ZUR		URBAN AREA					
		ZURN	Number	2				1
		ZURD	Name	70				3
	SET		SECTOR					
		SETT	Type	50			C	1
		SETN	Number	3				1
		SETD	Name	50				3
		SETP	Sector number	3				1

This paragraph records the geo-administrative location of the asset at the time the sheet is compiled.

*The compilation of the paragraph is mandatory.*

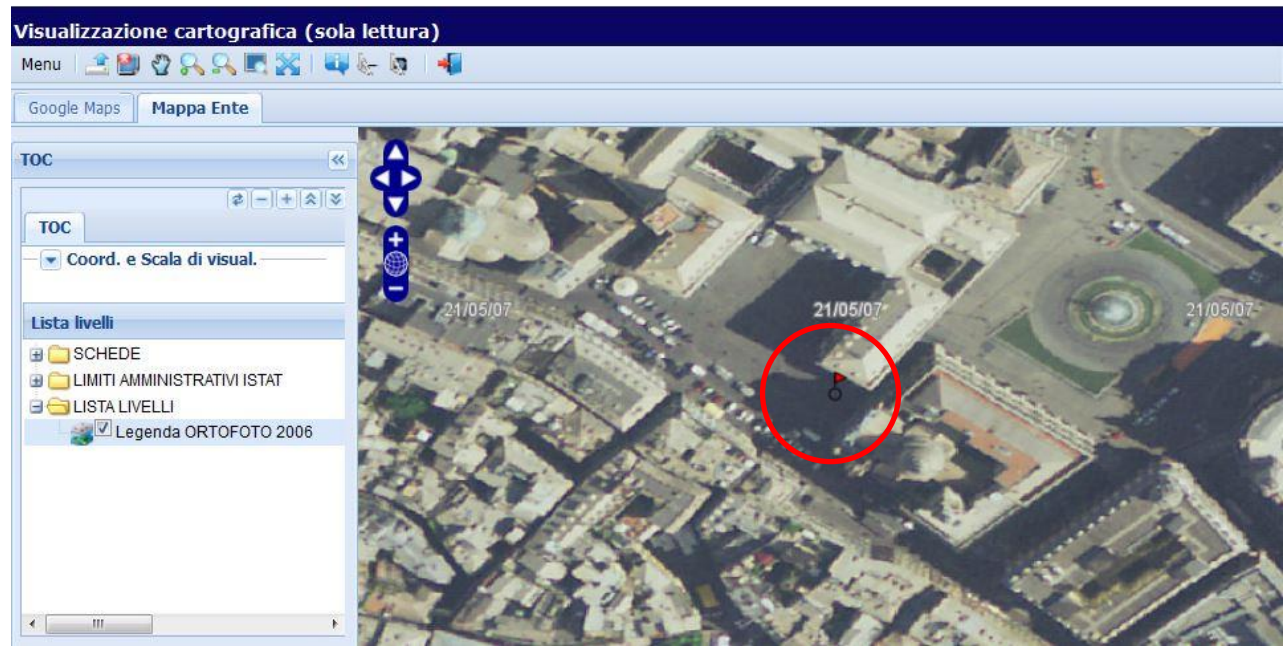
# A sheet: Paragraph LC GEOGRAPHIC ADMINISTRATIVE LOCATION

The screenshot shows a web application interface for selecting geographic administrative locations. The main title is "LC - LOCALIZZAZIONE GEOGRAFICO-AMMINISTRATIVA". Below it, a red box highlights a search icon. The interface is organized into a tree structure on the left and a list of selection options on the right. The tree structure includes:

- PVC - LOCALIZZAZIONE GEOGRAFICO-AMMINISTRATIVA
  - PVCS - Stato
  - PVCR - Regione
  - PVCP - Provincia
  - PVCC - Comune
  - PVCL - Località
  - PVCE - Altra ripartizione amministrativa o località estri
  - PVCI - Indirizzo

The selection options on the right are:

- ITALIA
- Liguria
- GE
- Genova
- Piazza Matteotti



Acronym		Definition	LUN.	RIP.	OBB.	VOC.	VIS.
<b>CS</b>		<b>CADASTRAL LOCATION</b>		<b>Yes</b>	*		
	CTL	Type of location	40		*	C	1
	CTS	CADASTRAL LOCATION		Yes	*		
	CTSC	Municipality	50		*		1
	CTSF	Sheet/data	100	Yes	*		3
	CTSN	Part	500	Yes	*		2
	CTSP	Owners	500	Yes			2
	CTSE	Delineating-bounding elements	1000				2

## CS - LOCALIZZAZIONE CATASTALE

### CTL - Tipo di localizzazione

localizzazione fisica

### CTS - LOCALIZZAZIONE CATASTALE

#### CTSC - Comune

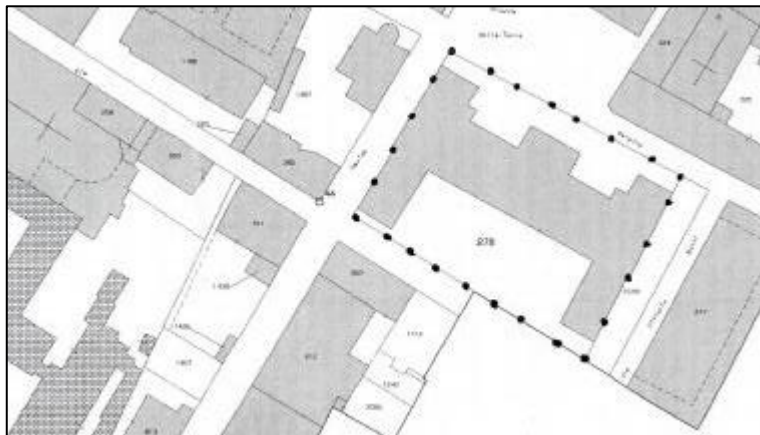
Chiavari

#### CTSF - Foglio/Data

catasto fabbricati-15

#### CTSN - Particelle

278 sub. 1, 2, 3, 4



This paragraph recorded information linking the location of the property with national cadastral division.

*The paragraph is repeatable and its compilation is mandatory.*

Acronym	Definition	LUN.	RIP.	OBB.	VOC.	VIS.
<b>LS</b>	<b>HISTORIC LOCATION</b>		Yes			
LST	Type of location	40		(*)	C	3
LCS	HISTORIC LOCATION		Yes			
LCSR	Territorial area	50				3
LCST	Territorial subdivision	250				3
LCSI	City/settlement/locality	50				3
LCSA	Administrative area	250				3
LCS D	Date	25		(*)		3
LCSF	Source	250		(*)		3
LTS	HISTORIC PLACE NAME		Yes			
LTST	Place name	250		(*)		3
LTSD	Date	25		(*)		3
LTSF	Source	250		(*)		3
LVS	HISTORIC ROAD/STREET CONTEXT		Yes			
LVSD	Name	250		(*)		3
LVST	Date	25		(*)		3
LVSF	Source	250		(*)		3
LVS N	Notes and observations	1000				3
CSS	HISTORIC CADASTER LOCATION		Yes			
CSSD	Name and type of cadaster	250		(*)	A	3
CSSF	Name of the cadaster map unit	1000				3
CSSN	Part	1000		(*)		2
CSSP	Owners	1000				2
CSSE	Delineating-bounding elements	1000				2
CSST	Date	25		(*)		2

This paragraph records the historical topographic context in which the cultural property was originated and lived.

About the management of the cultural property location on the territory by coordinates, there are three paragraphs available for the georeferencing:

**GP – GEOREFERENCING BY POINT**

**GL - GEOREFERENCING BY LINE**

**GA – GEOREFERENCING BY AREA**

Each cultural property requires only one occurrence to be compiled, depending on the situations.



Acronym			Definition	LUN.	RIP.	OBB.	VOC.	VIS.
<b>GP</b>			<b>POINT GEOREFERENCING</b>		<b>Yes</b>			
	GPL		Type of location	40		(*)	C	3
	GPD		REFERENCE POINT DESCRIPTION			(*)		
		GPDP	REFERENCE POINT			(*)		
		GPDPX	x coordinate	12		(*)		3
		GPDPY	y coordinate	12		(*)		3
	GPC		REFERENCE POINT FEATURES					
		GPCT	Type	50				3
		GPCL	Altitude a.s.l.	12				3
		GPCI	Minimum altitude a.s.l. of reference point	12				3
		GPCS	Maximum altitude a.s.l. of reference point	12				3
	GPM		Georeferencing method	70		(*)	C	3
	GPT		Georeferencing technique	70		(*)	C	3
	GPP		Projection and Reference system	50		(*)	C	3
	GPB		REFERENCE BASE			(*)		
		GPBB	Summary description	20		(*)		3
		GPBT	Date	10		(*)		3
		GPBO	Note	250				3

Information about georeferencing by point of cultural property, expressed by coordinates (geographic or projected)



**Visualizzazione cartografica (sola lettura)**

Menu

Google Maps **Mappa Ente**

**TOC** << >>

TOC

Coord. e Scala di visual.

**Lista livelli**

- SCHEDE
- LIMITI AMMINISTRATIVI ISTAT
- LISTA LIVELLI
- Legenda ORTOFOTO 2006

An aerial orthophoto map showing a residential area with buildings, roads, and green spaces. A red square marker is visible on one of the buildings. The date 13/07/07 is displayed in the corners of the map area. The interface includes a navigation toolbar with arrows and a zoom-in (+) and zoom-out (-) button.

Acronym	Definition	LUN.	RIP.	OBB.	VOC.	VIS.
<b>GL</b>	<b>LINE GEOREFERENCING</b>		Yes			
GLL	Type of location	40		(*)	C	3
GLD	DESCRIPTION OF THE LINE			(*)		
	GLDP POINT ON THE LINE		Yes	(*)		
	GLDPX x coordinate	12		(*)		3
	GLDPY y coordinate	12		(*)		3
GLQ	LINE ALTIMETRY					
	GLQI Minimum altitude a.s.l.	12				3
	GLQS Maximum altitude a.s.l.	12				3
GLM	Georeferencing method	70		(*)	C	3
GLT	Georeferencing technique	70		(*)	C	3
GLP	Projection and Reference system	50		(*)	C	3
GLB	REFERENCE BASE			(*)		
	GLBB Summary description of reference base	20		(*)		3
	GLBT Date	10		(*)		3
	GLBO Note	250				3

## GL - GEOREFERENZIAZIONE TRAMITE LINEA

<b>GLL - Tipo di localizzazione</b>	localizzazione fisica
<b>GLD - DESCRIZIONE DELLA LINEA</b>	
<b>GLDP - PUNTO DELLA LINEA</b>	
<b>GLDPX - Coordinata X</b>	9.3245665533
<b>GLDPY - Coordinata Y</b>	44.317560739
<b>GLDP - PUNTO DELLA LINEA</b>	
<b>GLDPX - Coordinata X</b>	9.3249179226
<b>GLDPY - Coordinata Y</b>	44.317410535
<b>GLM - Metodo di georeferenziazione</b>	sviluppo esatto
<b>GLT - Tecnica di georeferenziazione</b>	rilievo da foto aerea senza sopralluogo
<b>GLP - Proiezione e Sistema di riferimento</b>	WGS84
<b>GLB - BASE DI RIFERIMENTO</b>	
<b>GLBB</b>	ICCD1004366_OI.ORTOI
<b>GLBT - Data</b>	7-5-2017
<b>GLBO - Note</b>	(3630715) -ORTOFOTO 2006- ( <a href="http://wms.pcn.minambiente.it/ogc?map=/ms_ogc/WMS_v1.3/raster/ortofoto_colore_06.map">http://wms.pcn.minambiente.it/ogc?map=/ms_ogc/WMS_v1.3/raster/ortofoto_colore_06.map</a> ) -OI.ORTOIMMAGINICOLORE.2006

Information about georeferencing by line, identified by coordinate pairs (geographic or projected).



Visualizzazione cartografica (sola lettura)

Menu

Google Maps **Mappa Ente**

TOC

TOC

Coord. e Scala di visual. \_\_\_\_\_

Lista livelli

- SCHEDE
- LIMITI AMMINISTRATIVI ISTAT
- LISTA LIVELLI
- Legenda ORTOFOTO 2006

An aerial orthophoto map showing a dense urban area. A blue line is drawn across the map, with a red arrowhead pointing to the right. The date "13/07/07" is visible in two locations on the map. The interface includes navigation controls on the left side.

# A sheet: Paragraph GA – GEOREFERENCING BY AREA

Acronym	Definition	LUN.	RIP.	OBB.	VOC.	VIS.
<b>GA</b>	<b>AREA GEOREFERENCING</b>		<b>Yes</b>			
GAL	Type of location	40		(*)	C	3
GAD	POLYGON DESCRIPTION			(*)		
	GADP POLYGON POINT		Yes	(*)		
	GADPX x coordinate	12		(*)		3
	GADPY y coordinate	12		(*)		3
GAQ	AREA ALTIMETRY					
	GAQI Minimum altitude a.s.l.	12				3
	GAQS Maximum altitude a.s.l.	12				3
GAM	Georeferencing method	70		(*)	C	3
GAT	Georeferencing technique	70		(*)	C	3
GAP	Projection and Reference system	50		(*)	C	3
GAB	REFERENCE BASE			(*)		
	GABB Summary description	20		(*)		3
	GABT Date	10		(*)		3
	GABO Note	250				3

## GA - GEOREFERENZIAZIONE TRAMITE AREA

GAL - Tipo di localizzazione localizzazione fisica

### GAD - DESCRIZIONE DEL POLIGONO

#### GADP - PUNTO DEL POLIGONO

GADPX - Coordinata X 9.3251969499

GADPY - Coordinata Y 44.315781206

#### GADP - PUNTO DEL POLIGONO

GADPX - Coordinata X 9.3253337426

GADPY - Coordinata Y 44.315730244

#### GADP - PUNTO DEL POLIGONO

GADPX - Coordinata X 9.3254490776

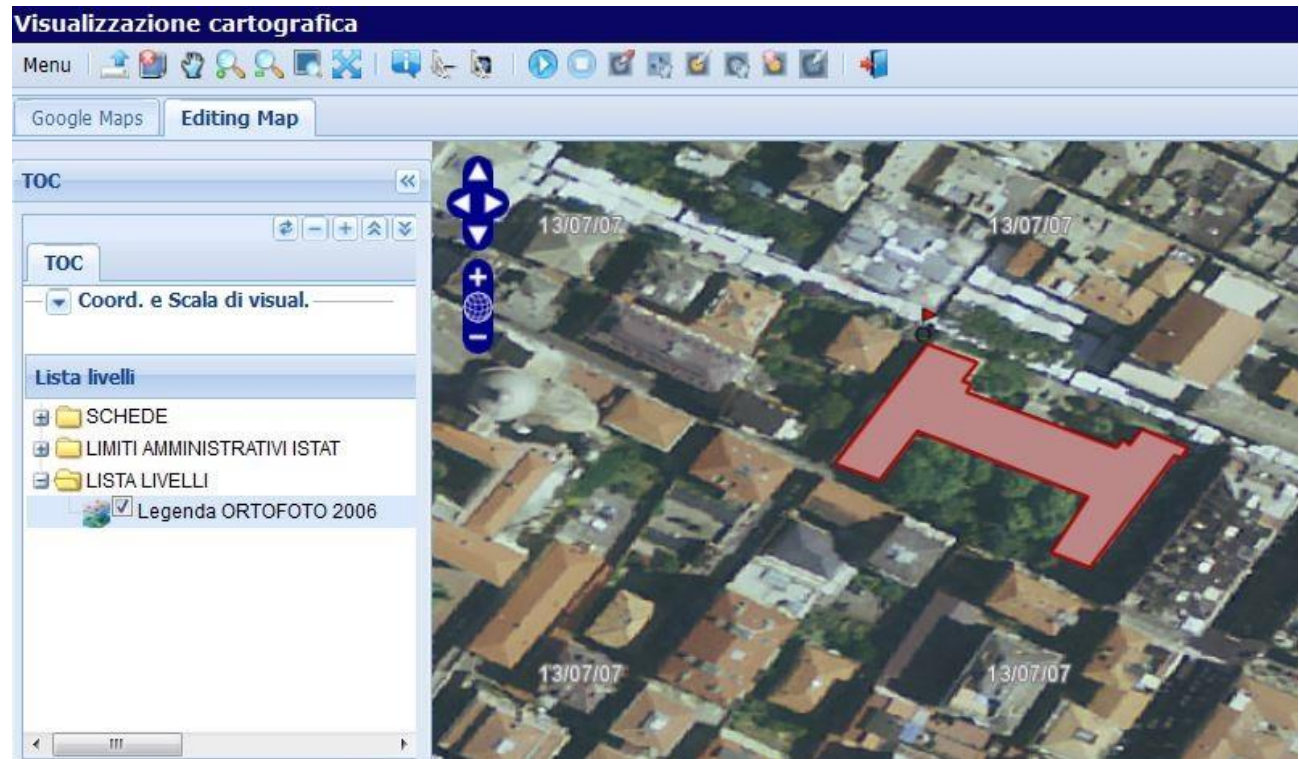
GADPY - Coordinata Y 44.315880447

#### GADP - PUNTO DEL POLIGONO

GADPX - Coordinata X 9.3259694261

GADPY - Coordinata Y 44.315679282

Information about georeferencing by area, defined by a polygon that is identified by coordinate pairs (geographic or projected).



Acronym		Definition	LUN.	RIP.	OBB.	VOC.	VIS.
AU		<b>CULTURAL DEFINITION</b>			*		
	AUT	AUTHOR		Yes			
	AUTR	Reference to intervention (role)	50			A	1
	AUTS	Relation to name	50			A	1
	AUTM	Source for attribution	250	Yes	(*)	C	1
	NCUN	ICCD identifying code	8			code assigned by	1
	AUTN	Author/chosen name	100		(*)		1
	AUTB	Collective body/chosen name	150				1
	AUTA	Identifying data/period of activity	70		(*)		1
	AUTH	Citation acronym	8		(*)		1
	ATB	<b>CULTURAL CONTEXT</b>		Yes	*		
	ATBR	Reference to intervention	50		*	A	1
	ATBD	Name	50		*		1
	ATBM	Source for attribution	250	Yes	*	C	1

This paragraph records the information about the subjects involved in the realization of the cultural property and / or its cultural context.

*Compilation is mandatory.*

Acronym			Definition	LUN.	RIP.	OBB.	VOC.	VIS.
<b>RE</b>			<b>HISTORICAL INFORMATION</b>		Yes	*		
	REN		INFORMATION			*		
		RENr	Reference	50		*	A	1
		RENS	Summary information	50			A	1
		RENN	Information	1000				2
		RENF	Source	250	Yes	*		2
	REL		DATING, EARLIEST DATE			*		
		RELS	Century	10		*		1
		RELV	Confidence	25			C	1
		RELF	Part of century	15			C	1
		RELW	Confidence	25			C	1
		RELI	Date	11				1
		RELX	Confidence	25			C	1
	REV		DATING, LAST DATE			*		
		REVS	Century	10		*		1
		REVV	Confidence	25			C	1
		REVF	Part of century	15			C	1
		REVW	Confidence	25			C	1
		REVI	Date	11				1
		REVX	Confidence	25			C	1

Chronological repertoire of all the news (general and specific news) about the cultural property. Each news can be referred to an extended period or to a single date. The whole paragraph is repeatable, and it must be full compiled for each news item.

*It is mandatory to use this paragraph at least once, to specify the origin of the building or the predominant period of construction.*

RE - NOTIZIE STORICHE	
<b>REN - NOTIZIA</b>	
RENr - Riferimento	intero bene
RENS - Notizia sintetica	rifacimento
RENN - Notizia	la nuova chiesa, rifabbricata a partire dagli anni Quaranta del XIV secolo capovolgendone l'orientamento, prese avvio dalla zona del presbitero e delle cappelle absidali, probabilmente allo scopo di mantenere comunque efficiente la preesistente durante l'esecuzione dei lavori
RENF - Fonte	New_1422523537720
RENF - Fonte	00001874
RENF - Fonte	00001195
RENF - Fonte	00001323
<b>REL - CRONOLOGIA, ESTREMO REMOTO</b>	
RELS - Secolo	XIV
<b>REV - CRONOLOGIA, ESTREMO RECENTE</b>	
REVS - Secolo	XIV



Acronym			Definition	LUN.	RIP.	OBB.	VOC.	VIS.
<b>PE</b>			<b>PREVIOUS STRUCTURES/FEATURES</b>					
	PRE		PREVIOUS STRUCTURES/FEATURES		Yes			
		PREU	Location	50			A	1
		PREI	Identification	70				3
Acronym			Definition	LUN.	RIP.	OBB.	VOC.	VIS.
SI			SPACES					
	SII		INTERIOR SUBDIVISIONS		Yes			
		SIIR	Reference	50			A	1
		SIIO	Type of horizontal subdivision	25			A	1
		SIIN	Number of floors	2				1
		SIIP	Type of floors	250			A	1
		SIIV	Vertical subdivision	50			A	1

The paragraph provides a concise, but complete description of any earlier structures/materials (also of minimal traces) that have affected the realization of the cultural property.

E.g. remains of constructions embedded in any way in the building under examination.

Acronym		Definition	LUN.	RIP.	OBB.	VOC.	VIS.
<b>SI</b>		<b>SPACES</b>					
	SII	INTERIOR SUBDIVISIONS		Yes			
	SIIR	Reference	50			A	1
	SIIO	Type of horizontal subdivision	25			A	1
	SIIN	Number of floors	2				1
	SIIP	Type of floors	250			A	1
	SIIV	Vertical subdivision	50			A	1

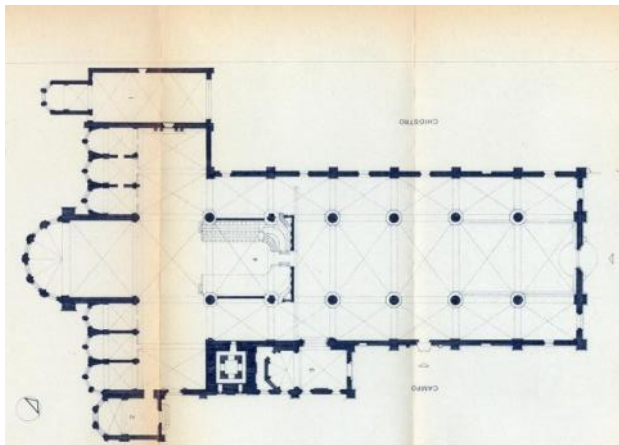
**SI - SPAZI**
**SII - SUDDIVISIONE INTERNA**

**SIIR - Riferimento** intero bene

**SIIN - Numero di piani** +1

**SIIP - Tipo di piani** p. t.

**SIIV - Suddivisione verticale** tre navate



Description of the conformation and organization of the interior space, specifying its general subdivision and indicating any possible peculiarity, from a compositional and / or functional point of view.

To better understand the complex, cultural property could be disaggregated in several parts, using the repeatability of the structured SII field.

Acronym	Definition	LUN.	RIP.	OBB.	VOC.	VIS.
<b>IS</b>	<b>STRUCTURAL SYSTEM</b>					
IST	Primarily structural system	1000				1
ISS	SECONDARY STRUCTURAL ELEMENTS		Yes			
	ISSU Location	50				1
	ISST Type	25			A	1

## IS - IMPIANTO STRUTTURALE

### IST - Configurazione strutturale primaria

pianta isolata, pendio longitudinale, livello sfalsamento differenziato; muratura intonacata esternamente, tinteggiata ed intonacata internamente.



<b>PN - PIANTA</b>	
<b>PNT - PIANTA</b>	
PNTF - Forma	irregolare
<b>FN - FONDAZIONI</b>	
<b>FNS - STRUTTURE</b>	
FNSM - Materiali	pietra
<b>SV - STRUTTURE VERTICALI</b>	
<b>SVC - TECNICA COSTRUTTIVA</b>	
SVCT - Tipo di struttura	parete
SVCC - Genere	in muratura
SVCC - Qualificazione del genere	a conci irregolari a vista
<b>SO - STRUTTURE DI ORIZZONTAMENTO</b>	
<b>SOF - TIPO</b>	
SOFG - Genere	volta
SOFF - Forma	a botte
<b>CP - COPERTURE</b>	
<b>CPF - CONFIGURAZIONE ESTERNA</b>	
CPFG - Genere	a volta
CPFF - Forma	alla prova
<b>CP - COPERTURE</b>	
<b>CPF - CONFIGURAZIONE ESTERNA</b>	
CPFG - Genere	distrutta

This paragraph describes the structural system of the cultural property, analysed in the following PN, FN, SV, SO and CP paragraphs.

During pre-cataloguing, IS paragraph can be used as an alternative to PN, FN, SV, SO and CP paragraphs.

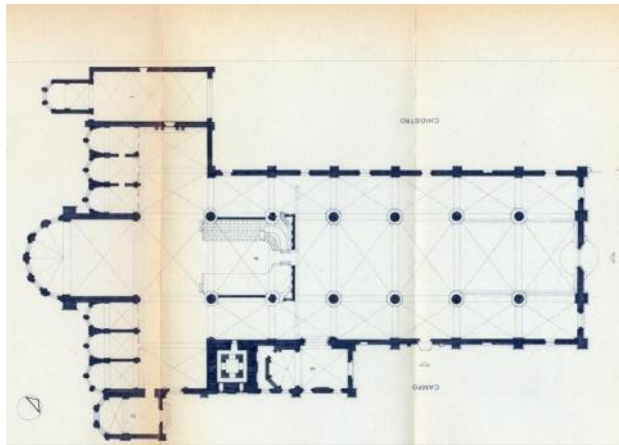
Acronym		Definition	LUN.	RIP.	OBB.	VOC.	VIS.
<b>PN</b>		<b>PLAN</b>		<b>Yes</b>			
	PNR	Reference to part	25			A	1
	PNT	PLAN					
	PNTQ	Reference to floor or level	25				1
	PNTS	Layout	50			A	1
	PNTF	Form	25				1
	PNTE	Significant iconographic information	75	Yes			1

**PN - PIANTA**

**PNR - Riferimento alla parte** intero bene

**PNT - PIANTA**

**PNTS - Schema** a croce latina



The information in this paragraph describes the current planimetric mapping of the cultural property.

To better understand the complex, cultural property could be disaggregated in several parts, using the repeatability of the paragraph.

Acronym		Definition	LUN.	RIP.	OBB.	VOC.	VIS.
<b>FN</b>		<b>FOUNDATIONS</b>					
	FNA	Type of terrain at ground level	250				1
	FNS	STRUCTURE		Yes			
	FNSU	Location	50			A	1
	FNST	Type	25			A	1
	FNSQ	Type variation	25			A	1
	FNSC	Construction technique	50			A	1
	FNSM	Materials	250	Yes		A	1

Indications and data about cultural property foundations.

This information must be considered in a typological, functional and constructive point of view; where possible they provide information about the nature of the terrain on which they stand on.

Acronym	Definition	LUN.	RIP.	OBB.	VOC.	VIS.
<b>SV</b>	<b>VERTICAL STRUCTURES</b>					
SVC	CONSTRUCTION TECHNIQUE		Yes			
SVCU	Location	50				1
SVCT	Structure type	15			C	1
SVCC	Category	25			A	1
SVCQ	Type variation	50			A	1
SVCM	Materials	250	Yes		A	1

**SV - STRUTTURE VERTICALI****SVC - TECNICA COSTRUTTIVA**

<b>SVCU - Ubicazione</b>	intero bene
<b>SVCT - Tipo di struttura</b>	parete
<b>SVCC - Genere</b>	in muratura
<b>SVCM - Materiali</b>	laterizio

**SVC - TECNICA COSTRUTTIVA**

<b>SVCU - Ubicazione</b>	navate
<b>SVCT - Tipo di struttura</b>	colonne
<b>SVCM - Materiali</b>	pietra

Typological, morphological and technical indications and data about the vertical structures of the cultural property, from a structural point of view.

In this paragraph the historical-artistic and decorative value is not considered, because it will be analysed in other appropriate paragraphs.

Acronym		Definition	LUN.	RIP.	OBB.	VOC.	VIS.
<b>SO</b>		<b>HORIZONTAL STRUCTURES</b>		<b>Yes</b>			
	SOU	Location	50			A	1
	SOF	TIPO					
		SOFG	25			A	1
		SOFF	15			A	1
		SOFQ	25	Yes		A	1
		SOFP	50	Yes		A	1
	SOE	STRUCTURE					
		SOER	50			A	1
		SOEC	50	Yes		A	1
		SOES	50	Yes		A	1

<b>SO - STRUTTURE DI ORIZZONTAMENTO</b>	
<b>SOF - TIPO</b>	
<b>SOFG - Genere</b>	volta
<b>SOFF - Forma</b>	a crociera
<b>SO - STRUTTURE DI ORIZZONTAMENTO</b>	
<b>SOF - TIPO</b>	
<b>SOFG - Genere</b>	volta
<b>SOFF - Forma</b>	a padiglione



Typological, morphological and engineering information about horizontal structures, or horizontal connection of the cultural property.

To better understand the complex, cultural property could be disaggregated in several parts; in this case the paragraph must be repeated, specifying the part in the SOU Location field.

Acronym	Definition	LUN.	RIP.	OBB.	VOC.	VIS.
<b>CP</b>	<b>ROOFING</b>		<b>Yes</b>			
CPU	Location	50			A	1
CPF	EXTERNAL FORM					
	CPFG Type	15			A	1
	CPFF Form	50			A	1
	CPFQ Form variation	50			A	1
CPC	STRUCTURE AND TECHNIQUE					
	CPCR Reference	50			A	1
	CPCT Primary structure	25			A	1
CPM	ROOF COVER					
	CPMR Reference	50			A	1
	CPMT Type	25			A	1
	CPMQ Type variation	25	Yes		A	1
	CPMM Materials	250	Yes		A	1

Information on the external configuration, structures and the surface of the analysed architectural property. To better understand the complex, cultural property could be disaggregated in several parts; in this case the paragraph must be repeated, specifying the part in the CPU Location field.



**PN - PIANTA****PNT - PIANTA**

<b>PNTS - Schema</b>	centrale
----------------------	----------

<b>PNTF - Forma</b>	circolare
---------------------	-----------

**SV - STRUTTURE VERTICALI****SVC - TECNICA COSTRUTTIVA**

<b>SVCT - Tipo di struttura</b>	parete
---------------------------------	--------

<b>SVCM - Materiali</b>	pietra
-------------------------	--------

**CP - COPERTURE****CPF - CONFIGURAZIONE ESTERNA**

<b>CPF - Genere</b>	a cupola
---------------------	----------

**DE - ELEMENTI DECORATIVI****DEC - ELEMENTI DECORATIVI**

<b>DECT - Tipo</b>	gocciolatoio
--------------------	--------------

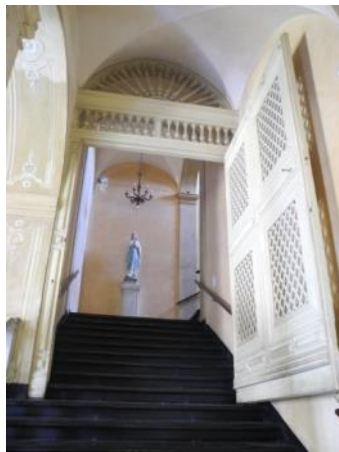
<b>DECM - Materiali</b>	marmo bianco
-------------------------	--------------



Acronym	Definition	LUN.	RIP.	OBB.	VOC.	VIS.
<b>SC</b>	<b>STAIRWAYS</b>		<b>Yes</b>			
SCL	STAIRWAYS					
	SCLU	Location	50		A	1
	SCLG	Type	25		A	1
	SCLO	Type	25		A	1
	SCLN	Quantity	4			1
	SCLL	Location	50		A	1
	SCLF	Plan layout	25		A	1
<b>SCS</b>	<b>STRUCTURAL LAYOUT</b>					
	SCSR	Reference	50		A	1
	SCST	Type	50		A	1
	SCSC	Technique	50	Yes		1
	SCSM	Materials	250	Yes	A	1

**SC - SCALE****SCL - SCALE**

<b>SCLU - Ubicazione</b>	interna
<b>SCLG - Genere</b>	scalone
<b>SCLO - Categoria</b>	principale
<b>SCLL - Collocazione</b>	baricentrale
<b>SCLF - Forma planimetrica</b>	a due rampe



Information and data about the fixed structural installations with steps used to ensuring the vertical connections.

Acronym		Definition	LUN.	RIP.	OBB.	VOC.	VIS.
<b>PV</b>		<b>FLOORS AND FLOORING</b>					
	PVM	FLOORS AND FLOORING		Yes			
	PVMU	Location	50			A	1
	PVMG	Category	50			A	1
	PVMS	Design	250	Yes		A	1

## **PV - PAVIMENTI E PAVIMENTAZIONI**

### **PVM - PAVIMENTI E PAVIMENTAZIONI**

<b>PVMU - Ubicazione</b>	corpo principale
<b>PVMG - Genere</b>	in marmo
<b>PVMS - Schema del disegno</b>	a motivi geometrici



Information describing, from a morphological and technical point of view, floorings inside the building or external pavements, with particular typological significance.

The floors with a particular artistic value are catalogued with the OA norms, but should be mentioned in this paragraph with summary description.

Acronym			Definition	LUN.	RIP.	OBB.	VOC.	VIS.
<b>DE</b>			<b>DECORATIVE ELEMENTS</b>					
	DEC		DECORATIVE ELEMENTS		Yes			
		DECU	Location	50			A	1
		DECL	Location	15			A	1
		DECT	Type	50			A	1
		DECQ	Type variation	250	Yes		A	1
		DECM	Materials	250	Yes		A	1

## DE - ELEMENTI DECORATIVI

### DEC - ELEMENTI DECORATIVI

<b>DECU - Ubicazione</b>	ambiente corpo centrale
<b>DECL - Collocazione</b>	interna
<b>DECT - Tipo</b>	affresco
<b>DECQ - Qualificazione del tipo</b>	a riquadri



Information about any decoration of the cultural property.

When decorations or homogeneous groups exist in the same building, they must be described separately.

Acronym	Definition	LUN.	RIP.	OBB.	VOC.	VIS.
<b>LI</b>	<b>INSCRIPTIONS, PLAQUES, ARMS</b>					
LSI	INSCRIPTIONS, PLAQUES, ARMS		Yes			
LSIU	Location	50			A	1
LSIG	Type	10			A	1
LSIT	Type	250				1
LSII	Transcription	1000				1
LSIC	Technique	15			A	1
LSIM	Materials	250	Yes		A	1

## LSI - ISCRIZIONI, LAPIDI, STEMMI

**LSIU - Ubicazione** prospetto sud

**LSIG - Genere** lapide

**LSIT - Tipo** documentaria

## LSII - Trascrizione testo

D. O. M. / VRBANO BOLZANIO BELLVNENSI / MINORITANAE  
FAMILIAE SACERDOTI / SVMMAE INTEGRITATIS ET  
INNOCENTIAE / QVI GRAECAS LITTERAS EXTORRES / IAM  
PRIDEM ET PROCVLA TERRA / ITALIA EXVLANTES NOBIS  
SVMMA / TVM DOCENTI TVM SCRIBENDI / LAVDE PRICEPS  
ASSETVIT. / PIERIVS VALERIANVS BOLZANIVS / EX  
FRATRE NEPOS INSITVTIONIS / EDVCATIONISQ. MEMOR  
POS. / VIXIT ANN. LXXXI. M. III. D. XII. / IN VOLVNTARIA  
PAVPERTATE / FELICISSIMVS IN OMNES QVOD / POTVIT  
SEMPER OFFICIOSVS / NVLLI VNQVAM INIVRIVS. / LOC.  
PRAECEPTORI MAIORVM SVOR. / CONCESSERE CORNELII  
PATRONI / MDXLV. M. APR.



Information about tombstones, coats of arms or inscriptions that are significant for the building or the history of the building.

Such objects should be described briefly, since they are filed separately with the OA and RA sheets.

Acronym		Definition	LUN.	RIP.	OBB.	VOC.	VIS.
<b>CO</b>		<b>CONSERVATION</b>					
	STC	CONSERVATION STATUS		Yes			
		STCR	Reference to part	50		A	1
		STCC	Conservation status	50		A	1
		STCO	Specific information	500			1

**CO - CONSERVAZIONE****STC - STATO DI CONSERVAZIONE**

**STCR - Riferimento alla parte** Intero bene

**STCC - Stato di conservazione** rudere

**STCO - Indicazioni specifiche** Tutta la struttura è in equilibrio instabile per cui è pericoloso accedere all'interno.



Information about the preservation status of the cultural property, evidenced by autostic observation

Acronym	Definition	LUN.	RIP.	OBB.	VOC.	VIS.
<b>RS</b>	<b>RESTORATIONS</b>					
RST	RESTORATIONS		Yes			
RSTR	Reference to part	50			A	1
RSTI	Start date	25				1
RSTF	End date	25				1
RSTT	Type of intervention	500	Yes			1

## RS - RESTAURI

### RST - RESTAURI

<b>RSTR - Riferimento alla parte</b>	decorazioni
<b>RSTI - Data inizio</b>	2010
<b>RSTF - Data fine</b>	2010
<b>RSTT - Tipo di intervento</b>	Cappelle dei Santi Francescani, restauro sarcofago e statua di S. Francesco e S. Elena

### RST - RESTAURI

<b>RSTR - Riferimento alla parte</b>	pertinenze
<b>RSTI - Data inizio</b>	2008
<b>RSTF - Data fine</b>	2008
<b>RSTT - Tipo di intervento</b>	sistemazione aree verdi di pertinenza della chiesa (manutenzione ordinaria)

### RST - RESTAURI

<b>RSTR - Riferimento alla parte</b>	campanile
<b>RSTI - Data inizio</b>	2004
<b>RSTF - Data fine</b>	2006
<b>RSTT - Tipo di intervento</b>	intervento di consolidamento statico (Progettazione e direzione: ing. A. Lionello; Esecuzione: Setten Genesis S.p.A., Vipp lavori S.p.A.)

Information about restoration interventions that affected the cultural property.



Acronym	Definition	LUN.	RIP.	OBB.	VOC.	VIS.
<b>US</b>	<b>USE</b>					
USA	CURRENT USE		Yes			
USAR	Reference to part	50			A	1
USAD	Use	50			A	1
USE	HISTORIC USE		Yes			
USOR	Reference to part	50			A	1
USOC	Dating reference	50				1
USOD	Use	50	Yes		A	1

**US - UTILIZZAZIONI****USA - USO ATTUALE****USAD - Uso**

Abitazione

**USO - USO STORICO****USOD - Uso**

Torre di avvistamento



Information about the use of the building from its original destination to the present time.

Only categories of use must be mentioned, avoiding unnecessary mentions of the use of individual environments, except when it is particularly significant  
E.g. chapel in a palace



# A sheet: Paragraph TU – LEGAL STATUS AND RESTRICTIONS

Acronym	Definition	LUN.	RIP.	OBB.	VOC.	VIS.
<b>TU</b>	<b>LEGAL STATUS AND RESTRICTIONS</b>					
ACQ	AQUISITIONS					
	ACQT Type of acquisition	50			A	1
	ACQN Name	50				2
	ACQD Date of acquisition	25				2
	ACQL Place of acquisition	50				2
CDG	LEGAL STATUS					
	CDGG Generic indications	50		*	C	1
	CDGS Specific indications	250	Yes			2
	CDGI Address	250	Yes			2
NVC	PROVISIONS FOR PROTECTION		Yes			
	NVCT Type of provision	50		(*)	A	1
	NVCE Details of provision	25				1
	NVCD Date of notification	25				1
	NVCF Date of registration or Official Gazette	50				1
	NVCP Extension of restriction	50				1
	NVCI Provisions in enactment	25				1
ALN	CHANGES IN OWNERSHIP/POSESSION/HOLDING		Yes			
	ALNT Type of event	50		(*)	A	1
	ALND Date of event	25		(*)		1
	ALNN Note	250				2
STU	URBAN PLANNING INSTRUMENTS					
	STUT Instruments in force	250				1
	STUN Legal summary for the area	250				1
	STUA Restrictions by other	250				1

This section records the information about the acquisition and legal status of the cultural property and the protection measures applied to it. When the sheet is updated, the events that have caused changes in the ownership or its material condition are mentioned here.

*The compilation of the paragraph is mandatory.*

## TU - CONDIZIONE GIURIDICA E VINCOLI

### CDG - CONDIZIONE GIURIDICA

**CDGG - Indicazione generica** proprietà Ente religioso cattolico

**CDGS - Indicazione specifica** Parrocchia di S. Anna

**CDGI - Indirizzo** Via Teglia 59 Genova

### NVC - PROVVEDIMENTI DI TUTELA

**NVCT - Tipo provvedimento** L. 1089/1939, art.4

**NVCE - Estremi provvedimento** 1942/01/08

### STU - STRUMENTI URBANISTICI

**STUT - Strumenti in vigore** P.R.G. 80



## TU - CONDIZIONE GIURIDICA E VINCOLI

### CDG - CONDIZIONE GIURIDICA

**CDGG - Indicazione generica** proprietà Ente pubblico territoriale

**CDGS - Indicazione specifica** Comune di Genova

**CDGI - Indirizzo** Via Garibaldi 9 Genova

### NVC - PROVVEDIMENTI DI TUTELA

**NVCT - Tipo provvedimento** L. 364/1909, art.5

**NVCE - Estremi provvedimento** 1912/02/22

### STU - STRUMENTI URBANISTICI

**STUT - Strumenti in vigore** P.R.G. 80

**STUN - Sintesi normativa zona** Restauro e risanamento conservativo, manutenzione straordinaria



# A sheet: Paragraph DO – REFERENCE SOURCES AND DOCUMENTS

Acronym	Definition	LUN.	RIP.	OBB.	VOC.	VIS.
<b>DO</b>	<b>REFERENCE SOURCES AND DOCUMENTS</b>			*		
FTA	PHOTOGRAPHIC DOCUMENTATION		Yes	*		
DRA	GRAPHIC DOCUMENTATION		Yes			
VDC	VIDEO-FILM DOCUMENTATION		Yes			
FNT	PUBLICATIONS AND DOCUMENTS		Yes			
ADM	OTHER MULTIMEDIA DOCUMENTATION		Yes			
BIB	BIBLIOGRAPHIC REFERENCE		Yes			
BIL	Complete citation	500	Yes			1

DO - FONTI E DOCUMENTI DI RIFERIMENTO	
<b>FTA - DOCUMENTAZIONE FOTOGRAFICA</b>	
FTAX - Genere	documentazione allegata
FTAP - Tipo	positivo b/n
FTAD - Data	1993
FTAC - Collocazione	SABAPGE
FTAN - Codice identificativo	0700108362_fta41949
<b>DRA - DOCUMENTAZIONE GRAFICA</b>	
DRAX - Genere	documentazione allegata
DRAT - Tipo	estratto di mappa catastale
DRAN - Codice identificativo	00108362_sc
<b>FNT - FONTI E DOCUMENTI</b>	
FNTP - Tipo	copia cartacea della scheda di catalogo
FNTD - Data	1993
FNTN - Nome archivio	SABAPGE
FNTS - Posizione	ATZENI 1993
FNTI - Codice identificativo	00108362_scheda
<b>FNT - FONTI E DOCUMENTI</b>	
FNTP - Tipo	copia del provvedimento di tutela
FNTD - Data	1981/04/07
FNTN - Nome archivio	SABAPGE
FNTS - Posizione	GENOVA RIVAROLO / MON 6
FNTI - Codice identificativo	00108362

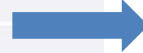
This section records information about documentation (pictures, drawings and reliefs, maps, videos, sources and published and unpublished documents, references) useful for the knowledge of heritage

# A sheet: Paragraph DO – REFERENCE SOURCES AND DOCUMENTS

## DO - FONTI E DOCUMENTI DI RIFERIMENTO

### FTA - DOCUMENTAZIONE FOTOGRAFICA

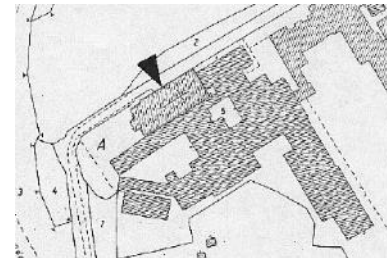
<b>FTAX - Genere</b>	documentazione allegata
<b>FTAP - Tipo</b>	positivo b/n
<b>FTAD - Data</b>	1993
<b>FTAC - Collocazione</b>	SABAPGE
<b>FTAN - Codice identificativo</b>	0700108362_fta41949



Photographic document

### DRA - DOCUMENTAZIONE GRAFICA

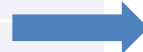
<b>DRAX - Genere</b>	documentazione allegata
<b>DRAT - Tipo</b>	estratto di mappa catastale
<b>DRAN - Codice identificativo</b>	00108362_sc



graphic document

### FNT - FONTI E DOCUMENTI

<b>FNTP - Tipo</b>	copia cartacea della scheda di catalogo
<b>FNTD - Data</b>	1993
<b>FNTN - Nome archivio</b>	SABAPGE
<b>FNTS - Posizione</b>	ATZENI 1993
<b>FNTI - Codice identificativo</b>	00108362_scheda



The image shows a composite of three documents related to the cultural heritage site. On the left is a catalog card from the 'MINISTERO PER I BENI CULTURALI E AMBIENTALI' with fields for 'POS', 'FOT', 'PUB', 'PUBC', 'PUBD', 'PUBS', 'PUBI', 'PUBN', 'PUBS', 'PUBI', 'PUBN', 'PUBS', 'PUBI', 'PUBN'. In the center is a small photograph of the building facade. On the right is a page from a publication titled 'IL MINISTRO DELLA PUBBLICA ISTRUZIONE' with a date of '1993' and a reference to 'Atzeni 1993'.

Publication and document

### FNT - FONTI E DOCUMENTI

<b>FNTP - Tipo</b>	copia del provvedimento di tutela
<b>FNTD - Data</b>	1981/04/07
<b>FNTN - Nome archivio</b>	SABAPGE
<b>FNTS - Posizione</b>	GENOVA RIVAROLO / MON 6
<b>FNTI - Codice identificativo</b>	00108362



# A sheet: Paragraph DO – REFERENCE SOURCES AND DOCUMENTS

Acronym	Definition	LUN.	RIP.	OBB.	VOC.	VIS.
<b>DO</b>	<b>REFERENCE SOURCES AND DOCUMENTS</b>			*		
FTA	PHOTOGRAPHIC DOCUMENTATION		Yes	*		
FTAX	Category	50		*	C	1
FTAP	Type	50		*	A	1
FTAA	Author	50				1
FTAD	Date	25				1
FTAE	Owning agency	250				1
FTAC	Location	50				2
FTAN	Identifying code	25		*		2
FTAT	Note	250				2
FTAF	Format	25				1

Each structured field contains descriptive technical data of the original document. In the case of attached documentation, the original document must be treated in accordance with the standards.

MC - METADATI DI CATALOGAZIONE	
FTA - DOCUMENTAZIONE FOTOGRAFICA	
FTAP - Tipo	fotografia digitale (file)
FTAA - Autore	Robino, Paolo
FTAD - Data	2016/05/05
FTAE - Ente proprietario	SBEAP AL
FTAC - Collocazione	Archivio fotografico
FTAN - Codice identificativo	SBEAPAL141/DIG
MM - METADATI DATO MULTIMEDIALE	
MMT - METADATI TECNICI DATO MULTIMEDIALE	
MMTO - Nome file originale	SBEAPAL_DIG00141.jpg



Each multimedia entity has:

- Its own identifier
- a set of descriptive information (type of document, author, date, etc.)
- An attached file (pdf, jpg ecc)

*The compilation of the paragraph is mandatory.*

Acronym	Definition	LUN.	RIP.	OBB.	VOC.	VIS.
AD	DATA ACCESS			*		
ADS	DETAILS OF DATA ACCESS			*		
ADSP	Access profile	1		*	C	1
ADSM	Reason	70		*	C	1
ADSD	Information on expiry date	25				1

1	<i>Low privacy: the information contained in the sheet can be freely consulted by anyone</i>
2	<i>Medium privacy: the sheet contains information restricted for reasons of privacy</i>
3	<i>High privacy: the sheet contains information restricted for reasons of security</i>

This section records the guidelines for the public distribution of catalogue data on the web, compiled by the cataloguer as determined by the agency responsible for the content of the norm.

*The compilation of the paragraph is mandatory.*



AD - ACCESSO AI DATI	
ADS - SPECIFICHE DI ACCESSO AI DATI	
ADSP - Profilo di accesso	1
ADSM - Motivazione	scheda contenente dati liberamente accessibili



AD - ACCESSO AI DATI	
ADS - SPECIFICHE DI ACCESSO AI DATI	
ADSP - Profilo di accesso	2
ADSM - Motivazione	scheda di bene di proprietà privata

Acronym	Definition	LUN.	RIP.	OBB.	VOC.	VIS.
<b>CM</b>	<b>COMPILATION</b>			*		
CMP	COMPILATION			*		
	CMPD	Date	4		*	1
	CMPN	Name	70	Yes	*	1
RSR	Reference scientist	70	Yes			1
FUR	Staff person responsible	70	Yes	*		1
RVM	TRANSCRIPTION FOR COMPUTERISATION					
	RVMD	Date	4		(*)	1
	RVMN	Name	70		(*)	1
AGG	UPDATING - REVISION		Yes			
	AGGD	Date	4		(*)	1
	AGGN	Name	70		(*)	1
	AGGE	Agency	70			1
	AGGR	Reference scientist	70	Yes		1
	AGGF	Staff person responsible	70	Yes	(*)	1
ISP	INSPECTIONS		Yes			
	ISPD	Date	4		(*)	1
	ISPN	Staff person responsible	70		(*)	1

This paragraph records information on the first sheet compilation (drafting and scientific verification) and any subsequent digitalisation, updating and revision work. Such information concerns the dates on which the activities have been carried out and the persons responsible for the content.

*The compilation of the paragraph is mandatory.*

#### CM - COMPILAZIONE

##### CMP - COMPILAZIONE

**CMPD - Data** 1986

**CMPN - Nome** Zanforlin, Monica

**FUR - Funzionario responsabile** NR

##### RVM - TRASCRIZIONE PER INFORMATIZZAZIONE

**RVMD - Data** 2014

**RVMN - Nome** Ippolito, Enrica

##### AGG - AGGIORNAMENTO - REVISIONE

**AGGD - Data** 2014

**AGGN - Nome** Ippolito, Enrica

**AGGF - Funzionario responsabile** Fumo, Grazia

Acronym		Definition	LUN.	RIP.	OBB.	VOC.	VIS.
AN		NOTES					
	OSS	Observations	5000				2

**AN - ANNOTAZIONI****OSS - Osservazioni**

Per l'edificio di cui faceva parte la loggia, andato distrutto nella seconda guerra mondiale e ricostruito integralmente nel 1957, è proposto il decaduto interesse. Il vincolo rinnovato nel 2009 riguarda i "resti di loggia del secolo XIII" costituiti da due archi di pietra sorretti da una colonna in granito di epoca romana con capitello romanico.



In this paragraph, additional information about cultural property may be recorded, typing free text. This is information that could not be included in specific fields of the sheet.





**MC - METADATI DI CATALOGAZIONE**

**FTA - DOCUMENTAZIONE FOTOGRAFICA**

FTAP - Tipo	fotografia digitale (file)
FTAA - Autore	Musetti, Valentina
FTAD - Data	2014/04
FTAN - Codice identificativo	0700320292_01
FTAT - Note	Cicagna (GE), monumento ai caduti, Ponte della Vittoria, prospetto

**MM - METADATI DATO MULTIMEDIALE**

**MMT - METADATI TECNICI DATO MULTIMEDIALE**

MMTO - Nome file originale	0700320292_01.JPG
----------------------------	-------------------

**Photographic documentation**



**MC - METADATI DI CATALOGAZIONE**

**DRA - DOCUMENTAZIONE GRAFICA**

DRAT - Tipo	estratto di mappa catastale
DRAN - Codice identificativo	00108465_sc

**MM - METADATI DATO MULTIMEDIALE**

**MMT - METADATI TECNICI DATO MULTIMEDIALE**

MMTO - Nome file originale	00108465_sc.pdf
----------------------------	-----------------

## Graphic documentation



DISCIPLINARY SECTOR ARCHITECTURAL AND LANDSCAPE HERITAGE

**PG sheet – Parks and gardens**

**AREA OF HERITAGE MANAGEMENT**

Architectural and landscape

**CATEGORY**

Immovable property

**DISCIPLINARY SECTOR**

Architectural and landscape heritage

**TYPE**

PG – Parks and Garden

This norm is used for the cataloguing of *green spaces of particular historical, artistic and environmental importance* :

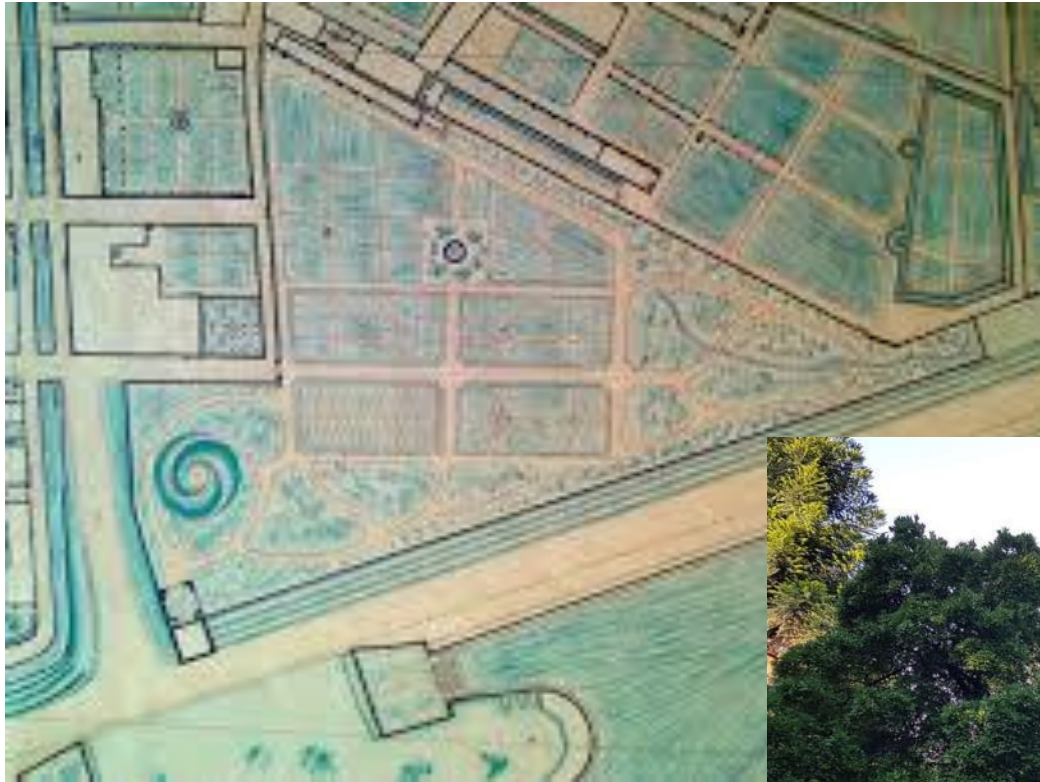
- gardens and parks annexed to noble properties
  - vegetables gardens
  - botanical gardens
  - urban parks
  - green areas included in archaeological sites
- +
- small private gardens
  - cloisters and courtyards
  - cemeteries

*if particularly relevant*

**OGT: Garden**

**OTN : Botinical**

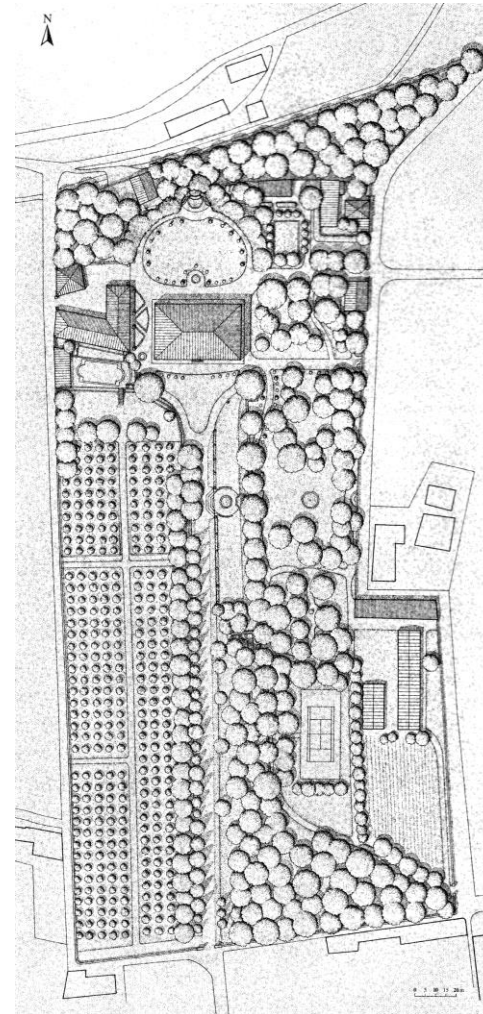
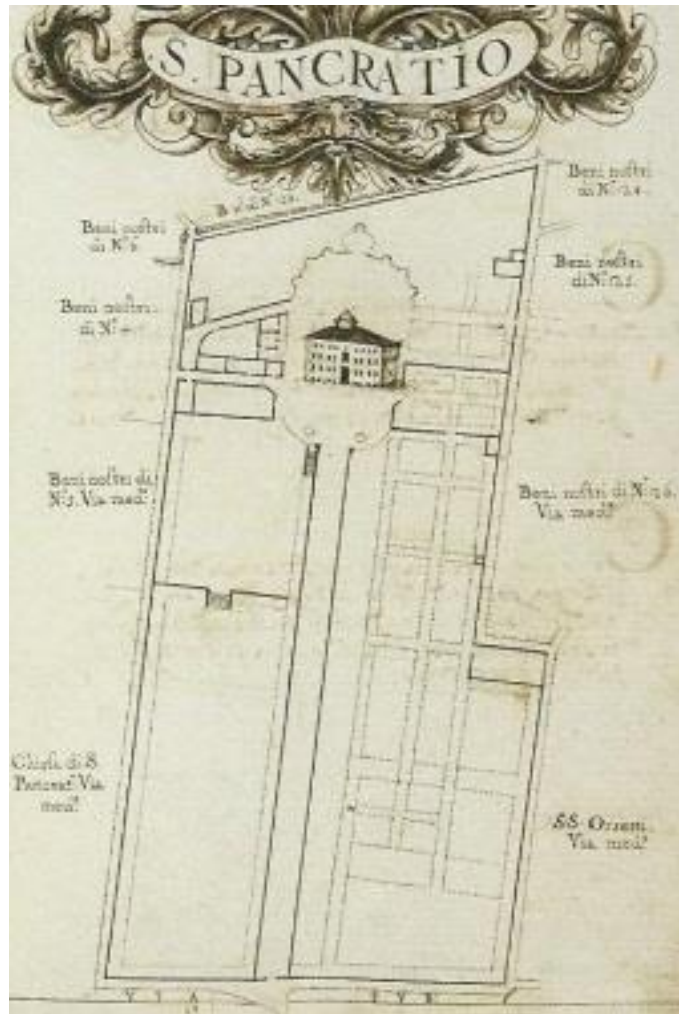
**OGTN: Botanical Garden of Lucca**



OGT: Villa

OTN : Private

OGTN: Villa Buonvisi



**OGT: garden**

**OTN : Private**

**OGTN: Garden of Hunting Lodge**



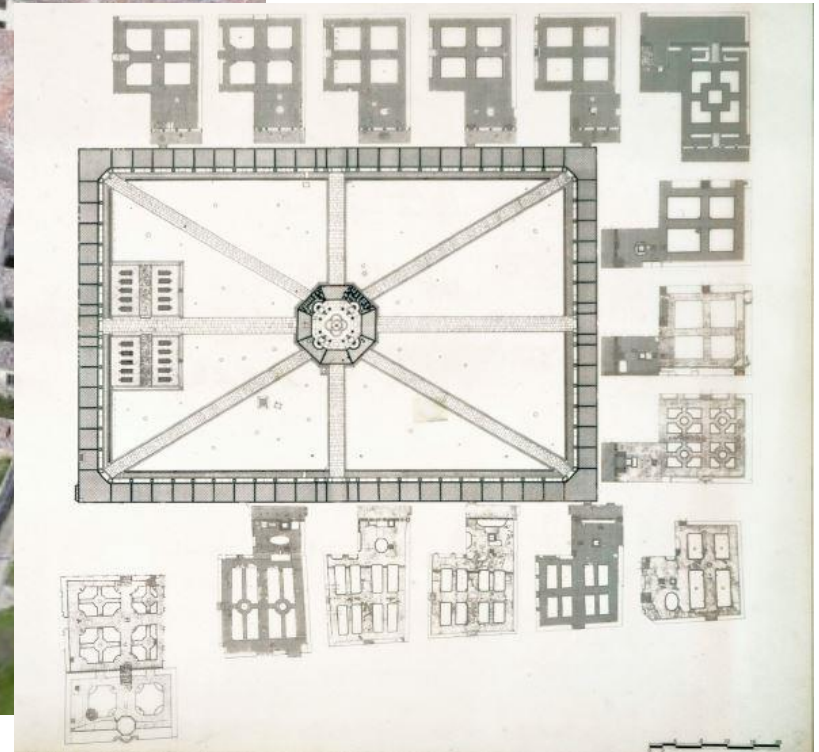


**OGT: park**

**OTN : Public**

**OGTN: Boboli Gardens**





## Cloistere Garden of The Monumental Charterhouse of Calci (Pisa)



**English Cemetery in Florence**



**Garden of Remembrance of Gorizia**

**Scheda**



CD - CODICI	
TSK - Tipo scheda	PG
LIR - Livello ricerca	C
NCT - CODICE UNIVOCO	
NCTR - Codice regione	09
NCTN - Numero catalogo generale	00141201
ESC - Ente schedatore	S122
ECP - Ente competente	S122
OG - OGGETTO	
OGT - OGGETTO	
OGTD - Definizione tipologica	giardino
OGTN - Denominazione	Giardino di Villa Rinaldi, poi Mansi, poi Nardi
LC - LOCALIZZAZIONE GEOGRAFICO-AMMINISTRATIVA	
PVC - LOCALIZZAZIONE GEOGRAFICO AMMINISTRATIVA	
PVCS - Stato	ITALIA
PVCR - Regione	Toscana
PVCP - Provincia	LU
PVCC - Comune	Lucca

paragraphs



- CD IDENTIFIERS
- RV RELATIONS
- AC OTHER IDENTIFIERS
- OG OBJECT
- LC GEOGRAPHIC-ADMINISTRATIVE LOCATION
- CS CADASTRAL LOCATION
- LS HISTORICAL LOCATION
- GP GEOREFERENCING BY POINT
- GL GEOREFERENCING BY LINE
- GA GEOREFERENCING BY AREA
- UT URBAN-TERRITORIAL PLANNING SYSTEM
- CA ENVIRONMENTAL FEATURES
- AU CULTURAL DEFINITION
- RE HISTORICAL INFORMATION
- PE PREVIOUS STRUCTURES/FEATURES
- FV FORM OF GREEN SPACE
- FO FOUNTAIN SYSTEM
- RC FENCING AND GATES
- MD BUILDINGS AND OBJECTS
- IM HISTORICALLY SIGNIFICANT ENGINEERING SYSTEMS
- PV FLOORINGS
- DE DECORATIVE ELEMENTS
- LI INSCRIPTIONS, PLAQUES, ARMS
- CO CONSERVATION
- RS RESTORATIONS
- US USE
- TU LEGAL STATUS AND RESTRICTIONS
- DO REFERENCE SOURCES AND DOCUMENTS
- AD DATA ACCESS
- CM COMPILATION
- AN NOTES

* +	CD - CODICI ?
+	RV - RELAZIONI ?
+	AC - ALTRI CODICI ?
<hr/>	
* +	OG - OGGETTO ?
* +	LC - LOCALIZZAZIONE GEOGRAFICO-AMMINISTRATIVA ? 
* +	CS - LOCALIZZAZIONE CATASTALE ?
+	LS - LOCALIZZAZIONE STORICA ?
+	GP - GEOREFERENZIAZIONE TRAMITE PUNTO ?
+	GL - GEOREFERENZIAZIONE TRAMITE LINEA ?
+	GA - GEOREFERENZIAZIONE TRAMITE AREA ?
+	UT - SISTEMA URBANISTICO TERRITORIALE ?
+	CA - CARATTERI AMBIENTALI ?
* +	AU - DEFINIZIONE CULTURALE ?
* +	RE - NOTIZIE STORICHE ?
+	PE - PREESISTENZE ?
+	MP - IMPIANTO ?
+	FV - FISIONOMIA DELL'AREA VERDE ?
+	FO - SISTEMA FONTANIERO ?
+	SC - SCALE ?
+	RC - RECINZIONI E CANCELLI ?
+	MD - EDIFICI E MANUFATTI ?
+	IM - IMPIANTI TECNICI DI INTERESSE STORICO ?
+	PV - PAVIMENTAZIONI ?
+	DE - ELEMENTI DECORATIVI ?
+	LI - ISCRIZIONI, LAPIDI, STEMMI ?
+	CO - CONSERVAZIONE ?
+	RS - RESTAURI ?
+	US - UTILIZZAZIONI ?
* +	TU - CONDIZIONE GIURIDICA E VINCOLI ?
* +	DO - FONTI E DOCUMENTI DI RIFERIMENTO ?
* +	AD - ACCESSO AI DATI ?
* +	CM - COMPILAZIONE ?
+	AN - ANNOTAZIONI ?

## CD IDENTIFIERS

RV RELATIONS

AC OTHER IDENTIFIERS

## OG OBJECT

LC GEOGRAPHIC-ADMINISTRATIVE LOCATION

CS CADASTRAL LOCATION

LS HISTORICAL LOCATION

GP GEOREFERENCING BY POINT

GL GEOREFERENCING BY LINE

GA GEOREFERENCING BY AREA

UT URBAN-TERRITORIAL PLANNING SYSTEM

CA ENVIRONMENTAL FEATURES

AU CULTURAL DEFINITION

RE HISTORICAL INFORMATION

PE PREVIOUS STRUCTURES/FEATURES

FV FORM OF GREEN SPACE

FO FOUNTAIN SYSTEM

RC FENCING AND GATES

MD BUILDINGS AND OBJECTS

IM HISTORICALLY SIGNIFICANT ENGINEERING SYSTEMS

PV FLOORINGS

DE DECORATIVE ELEMENTS

LI INSCRIPTIONS, PLAQUES, ARMS

CO CONSERVATION

RS RESTORATIONS

US USE

TU LEGAL STATUS AND RESTRICTIONS

DO REFERENCE SOURCES AND DOCUMENTS

AD DATA ACCESS

CM COMPILATION

AN NOTES

**CD** IDENTIFIERS  
**RV** RELATIONS  
**AC** OTHER IDENTIFIERS  
**OG** OBJECT  
**LC** GEOGRAPHIC-ADMINISTRATIVE LOCATION  
**CS** CADASTRAL LOCATION  
**LS** HISTORICAL LOCATION  
**GP** GEOREFERENCING BY POINT  
**GL** GEOREFERENCING BY LINE  
**GA** GEOREFERENCING BY AREA  
**UT** URBAN-TERRITORIAL PLANNING SYSTEM  
**CA** ENVIRONMENTAL FEATURES  
**AU** CULTURAL DEFINITION  
**RE** HISTORICAL INFORMATION  
**PE** PREVIOUS STRUCTURES/FEATURES  
**FV** FORM OF GREEN SPACE  
**FO** FOUNTAIN SYSTEM  
**RC** FENCING AND GATES  
**MD** BUILDINGS AND OBJECTS  
**IM** HISTORICALLY SIGNIFICANT ENGINEERING SYSTEMS  
**PV** FLOORINGS  
**DE** DECORATIVE ELEMENTS  
**LI** INSCRIPTIONS, PLAQUES, ARMS  
**CO** CONSERVATION  
**RS** RESTORATIONS  
**US** USE  
**TU** LEGAL STATUS AND RESTRICTIONS  
**DO** REFERENCE SOURCES AND DOCUMENTS  
**AD** DATA ACCESS  
**CM** COMPILATION  
**AN** NOTES

Some sections of the PG sheet are common to the record A. Those are the paragraphs linked to:

- **administrative information** on the norm resource
- **geographical information** linking the cultural property to its territory
- **information about documentation** related to the catalogued heritage

The specific paragraphs of the PG norm are about the **descriptive and technical information** of the parks and gardens.

**UT** URBAN-TERRITORIAL PLANNING SYSTEM  
**CA** ENVIRONMENTAL FEATURES  
**AU** CULTURAL DEFINITION  
**RE** HISTORICAL INFORMATION  
**PE** PREVIOUS STRUCTURES/FEATURES  
**FV** FORM OF GREEN SPACE  
**FO** FOUNTAIN SYSTEM  
**RC** FENCING AND GATES  
**MD** BUILDINGS AND OBJECTS  
**IM** HISTORICALLY SIGNIFICANT ENGINEERING SYSTEMS  
**PV** FLOORINGS  
**DE** DECORATIVE ELEMENTS  
**LI** INSCRIPTIONS, PLAQUES, ARMS



Acronym				Definition	LUN.	RIP.	OBB.	VOC.	VIS.
UT				URBAN-TERRITORIAL PLANNING SYSTEM					
	RAM			Environmental relations	1000				1

## UT - SISTEMA URBANISTICO TERRITORIALE

### RAM - Correlazioni ambientali

Il parco della rimembranza si colloca nel centro storico del Comune di Piovà Massaia, e si sviluppa su due piazze a diversa quota altimetrica, collegate da una via: in Piazza Guglielmo Marconi, di fronte al Municipio, è presente un'area verde circondata da una siepe, che comprende al suo interno un monumento a lapide, due lapidi intitolate alla Prima e alla Seconda Guerra Mondiale, un alzabandiera e due cannoni. All'angolo con Via Don Borio, è presente, sulla sinistra, una targa che reca la scritta "parco rimembranza". Lungo il viale è presente una serie di 20 alberi su cui sono apposte altrettante targhe intitolate ai caduti della Prima e della Seconda Guerra Mondiale. La via conduce in Piazza Don Borio: il lato est della piazza è delimitato dalla Chiesa parrocchiale intitolata ai Santi Pietro e Giorgio, mentre sugli altri tre lati sono presenti 21 alberi, su cui sono apposte altrettante targhe intitolate ai caduti della Prima Guerra Mondiale.



This paragraph contains information that can provide a description of the environmental (urban or extra-urban) context within which the cultural property is inserted.

E.g. in urban context, we have to specify if it borders with buildings or if it is surrounded by public/private streets and spaces.

CA			ENVIRONMENTAL CHARACTERISTICS					
	HAT		Total surface area	10				1
	CAC		Slope	250				1
	CAE		Exposure	250				1
	CAM		Morphology	250				1
	CAG		GEOLOGICAL/PEDOLOGICAL FEATURES					
		CAGG	General character	250				1
		CAGP	Specificities	250				1
	CAI		Available water	250				1
	CLM		CLIMATIC FEATURES		Yes			
		CLMS	Seasonal/monthly reference	25				1
		CLMF	Minimum temperature	3				1
		CLMC	Maximum temperature	2				1
		CLMP	Precipitation	4				1

**CA - CARATTERI AMBIENTALI**

<b>HAT - Superficie totale</b>	55
<b>CAC - Pendenze</b>	viale, 25%
<b>CAE - Esposizione</b>	viale, nord-ovest
<b>CAG - CARATTERI GEOLOGICI E/O PEDOLOGICI</b>	
<b>CAGG - Caratteri generali</b>	suoli di origine vulcanica
<b>CAGP - Peculiarità</b>	ph 5,9
<b>CAI - Disponibilità idriche</b>	Tipo di rete idrica: comunale, sorgente, pozzi; Disponibilità: sufficiente; Tipo di irrigazione: a pioggia

**CLM - CARATTERISTICHE CLIMATICHE**

<b>CLMS - Riferimento stagionale e/o mensile</b>	2007-2017, gennaio
<b>CLMF - Temperatura minima</b>	8
<b>CLMC - Temperatura massima</b>	25
<b>CLMP - Precipitazioni</b>	125

Information about the environmental context in which the cultural property is inserted when the sheet is compiled.

Acronym		Definition	LUN.	RIP.	OBB.	VOC.	VIS.
<b>PE</b>		<b>PREVIOUS STRUCTURES/FEATURES</b>					
	PRE	PREVIOUS STRUCTURES/FEATURES		Yes			
		PREU	Location	50		A	1
		PREI	Identification	70			3

## PE - PREESISTENZE

### PRE - PREESISTENZE

#### PREU - Ubicazione

giardino

#### PREI - Individuazione

tracce di muratura medievale in pietrame misto



The paragraph provides a concise, but complete description of any earlier structures/materials (also of minimal traces) that have affected the realization of the cultural property.

E.g. the remains of constructions included in the cultural property

Acronym		Definition	LUN.	RIP.	OBB.	VOC.	VIS.
<b>MP</b>		<b>LAYOUT</b>					
	MPT	LAYOUT PLAN		Yes			
		MPTR	Reference	50		A	1
		MPTT	Type	50		A	1
		MPTS	Layout	50		A	1
		MPTF	Form	50		A	1
	MPA	SCENOGRAPHIC AND COMPOSITIONAL DETAILS		Yes			
		MPAU	Location	50		A	1
		MPAT	Type	50		A	1
	MPC	INTERNAL PATHWAYS		Yes			
		MPCR	Reference	50		A	1
		MPCS	Description	250			1

**MP - IMPIANTO****MPT - IMPIANTO PLANIMETRICO**

MPTR - Riferimento      giardino

MPTT - Tipo                all'inglese

MPTF - Forma             rettangolare

**MPA - PECULIARITA' SCENOGRAFICHE E COMPOSITIVE**

MPAT - Tipo                grotta

**MPA - PECULIARITA' SCENOGRAFICHE E COMPOSITIVE**

MPAT - Tipo                peschiera

Description of the conformation and organization of the interior space, specifying its general subdivision and indicating any possible and specific compositional and / or functional peculiarities.

Such information must identify:

- typological category of the cultural property
- any features different from traditional types.



Acronym	Definition	LUN.	RIP.	OBB.	VOC.	VIS.
<b>FV</b>	<b>FORM OF GREEN SPACE</b>					
FVP	PRIMARILY STRUCTURAL ELEMENTS		Yes			
	FVPU Location	50				1
	FVPD Name of structural element	25				1
	FVPF Form	25			A	1
	FVPS Surface area	10				1
FVE	EXAMPLES OF RELIEF FEATURES		Yes			
	FVEU Location	50			A	1
	FVED Name	250				1
	FVEM Justification for relevance	70				1

**FV - FISIONOMIA DELL'AREA VERDE**
**FVP - STRUTTURA ELEMENTI PRIMARI**

<b>FVPU - Ubicazione</b>	area ovest (ZONA 1)
<b>FVPD - Denominazione elemento strutturale</b>	giardino
<b>FVPS - Superficie</b>	384

**FVP - STRUTTURA ELEMENTI PRIMARI**

<b>FVPU - Ubicazione</b>	area centrale (ZONA 2)
<b>FVPD - Denominazione elemento strutturale</b>	viale
<b>FVPS - Superficie</b>	342

**FVP - STRUTTURA ELEMENTI PRIMARI**

<b>FVPU - Ubicazione</b>	area est (ZONA 3)
<b>FVPD - Denominazione elemento strutturale</b>	parco rimembranza
<b>FVPS - Superficie</b>	1208

**FVE - ESEMPLARI DI RILIEVO**

<b>FVED - Denominazione</b>	ROSACEE/ Prunus laurocerasus/ Abs./ ml 70/ lauroceraso/ A
-----------------------------	---

**FVE - ESEMPLARI DI RILIEVO**

<b>FVED - Denominazione</b>	AQUIFOLIACEAE/ Ilex aquifolium L./ Csp./ N.1/ agrifoglio/ B
-----------------------------	---

**FVE - ESEMPLARI DI RILIEVO**

<b>FVED - Denominazione</b>	BERBERIDACEAE/ Nandina domestica/ Csp./ N. 2/ nandina/ C
-----------------------------	--

**FVE - ESEMPLARI DI RILIEVO**

<b>FVED - Denominazione</b>	ROSACEE/ Prunus cerasifera Pissardii/ Arb. / N. 19/ amolo/ D
-----------------------------	--

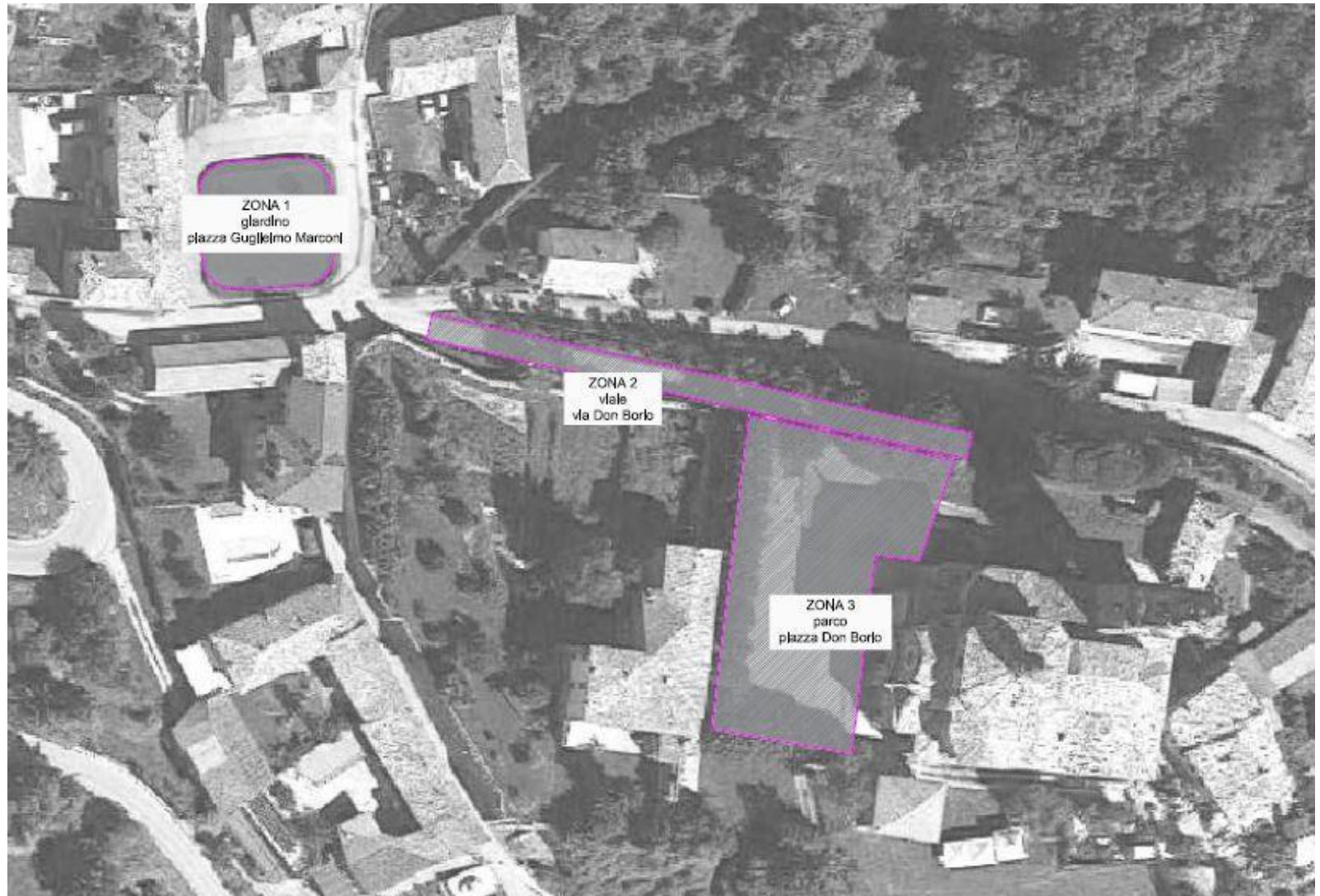
**FVE - ESEMPLARI DI RILIEVO**

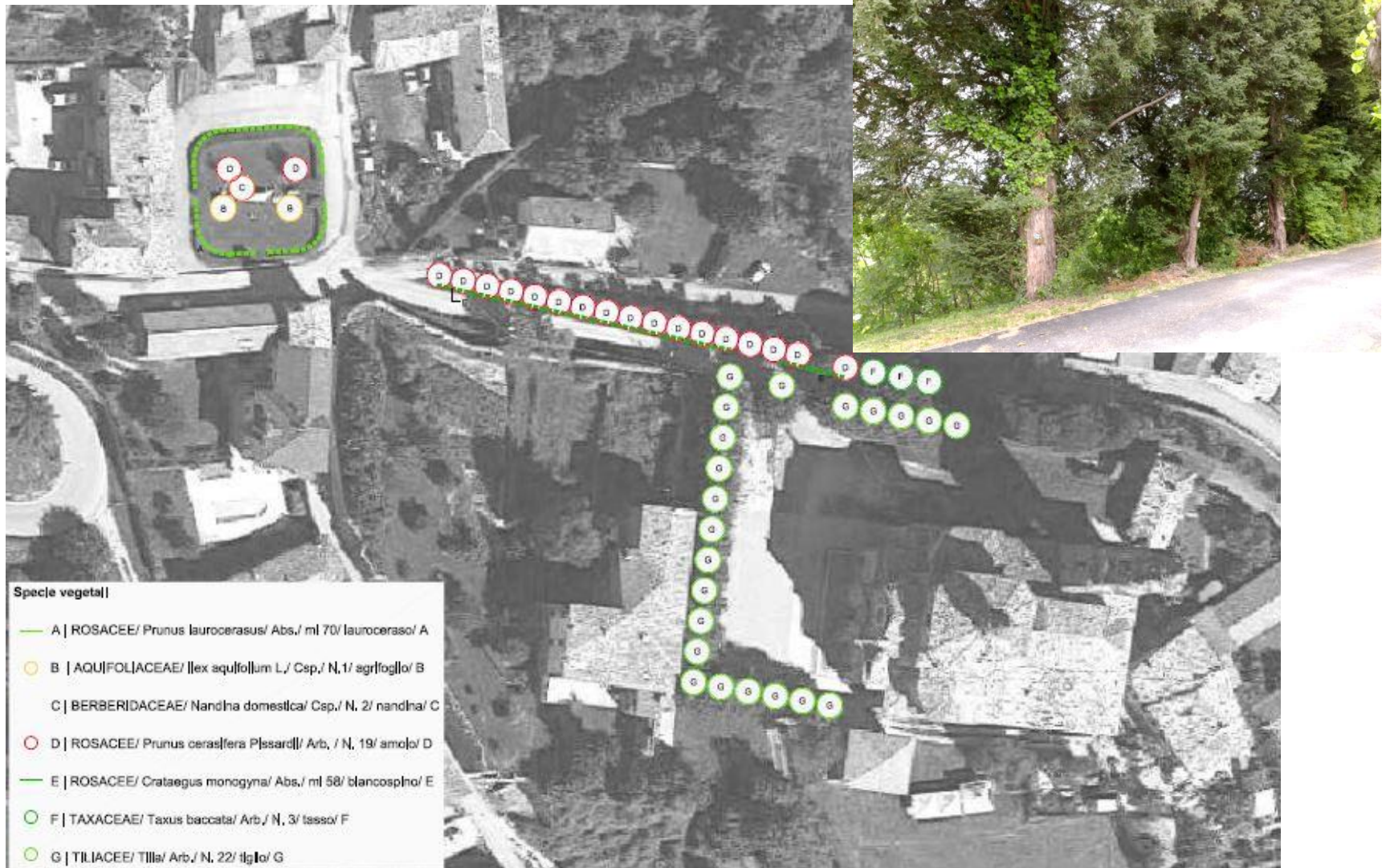
<b>FVED - Denominazione</b>	ROSACEE/ Crataegus monoqyna/ Abs./ ml 58/ biancospino/ E
-----------------------------	--

The information in this section describes the shape of the green area:

- primary elements, such as woods, meadow, bush, etc.
- important specimens.

The location is described by referring also to the potential map attached to the sheet.





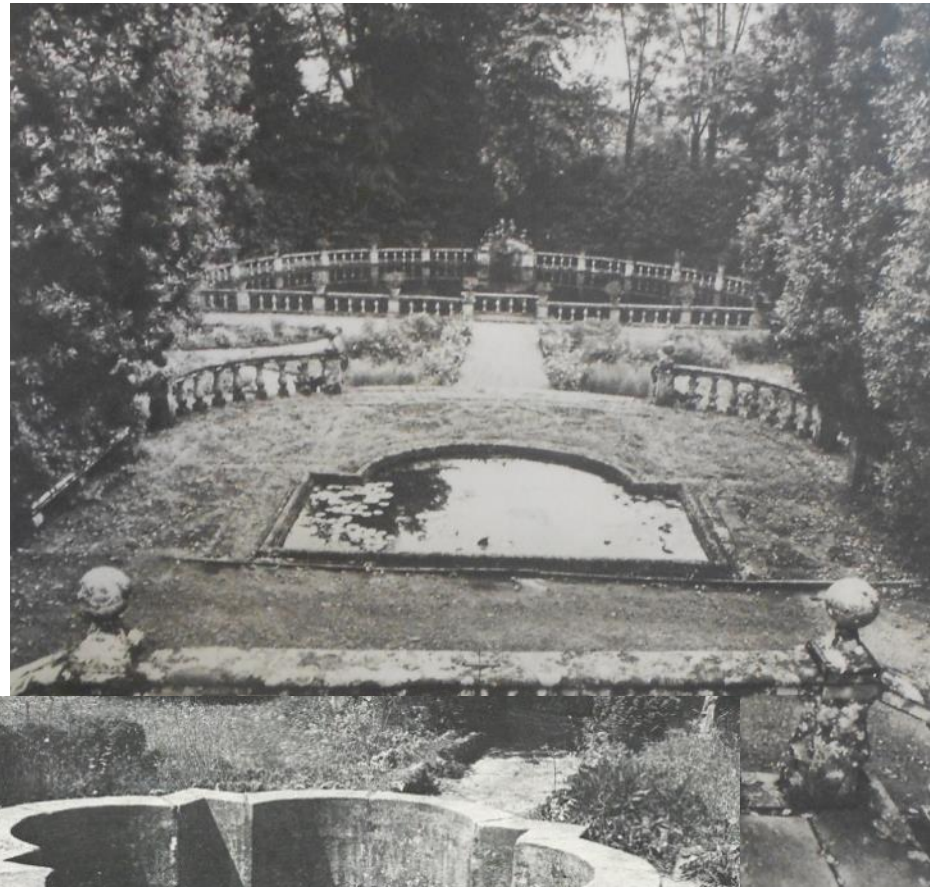


Acronym	Definition			LUN.	RIP.	OBB.	VOC.	VIS.
<b>FO</b>			<b>FOUNTAIN SYSTEM</b>					
	FOT		FOUNTAIN ELEMENT		Yes			
		FOTU	Location	50			A	1
		FOTG	Category	25			A	1
		FOTT	Type	50			A	1
		FOTD	Name	50				1
		FOTC	Construction technique	50			A	1
		FOTM	Materials	250	Yes		A	1
		FOTP	Significant details	250				1

**FO - SISTEMA FONTANIERO****FOT - ELEMENTO FONTANIERO**

<b>FOTU - Ubicazione</b>	giardino
<b>FOTG - Genere</b>	a zampillo
<b>FOTT - Tipo</b>	vasca con grotta artificiale
<b>FOTD - Denominazione</b>	fontana di Nettuno
<b>FOTC - Tecnica costruttiva</b>	in tufo con ciottoli e conchiglie
<b>FOTM - Materiali</b>	tufo

Typological, morphological and technical indications and data about the system by which the waters are distributed. The general distribution scheme must be indicated in relation to the supply specified in the previous CAI field.



Photos reproduced by: *BELLI BARSALI, LE VILLE LUCCHESI, 1964*



Acronym		Definition	LUN.	RIP.	OBB.	VOC.	VIS.
<b>SC</b>		<b>STAIRWAYS</b>		<b>Yes</b>			
	SCL	STAIRWAYS					
		SCLU	Location	50		A	1
		SCLG	Category	25		A	1
		SCLN	Quantity	2			1
		SCLF	Plan layout	25		A	1

**SC - SCALE****SCL - SCALE**

<b>SCLU - Ubicazione</b>	ingresso
<b>SCLG - Genere</b>	gradinata
<b>SCLN - Quantità</b>	2
<b>SCLF - Forma planimetrica</b>	a due rampe

Information and data about the fixed structural installations with steps used to ensuring the vertical connections.



Acronym		Definition	LUN.	RIP.	OBB.	VOC.	VIS.
<b>RC</b>		<b>FENCING AND GATES</b>					
	RCN	FENCING AND GATES		Yes			
	RCNG	Type	50			A	1
	RCNU	Location	50			A	1



Information about the different types of fences and gates that are particularly significant inside the cultural property.

Acronym			Definition	LUN.	RIP.	OBB.	VOC.	VIS.
<b>MD</b>			<b>BUILDINGS AND OBJECTS</b>					
	MDT		BUILDINGS AND OBJECTS		Yes			
		MDTU	Location	50			A	1
		MDTT	Type	50		(*)	A	1
		MDTM	Materials	250			A	1
		MDTP	Details	250				1

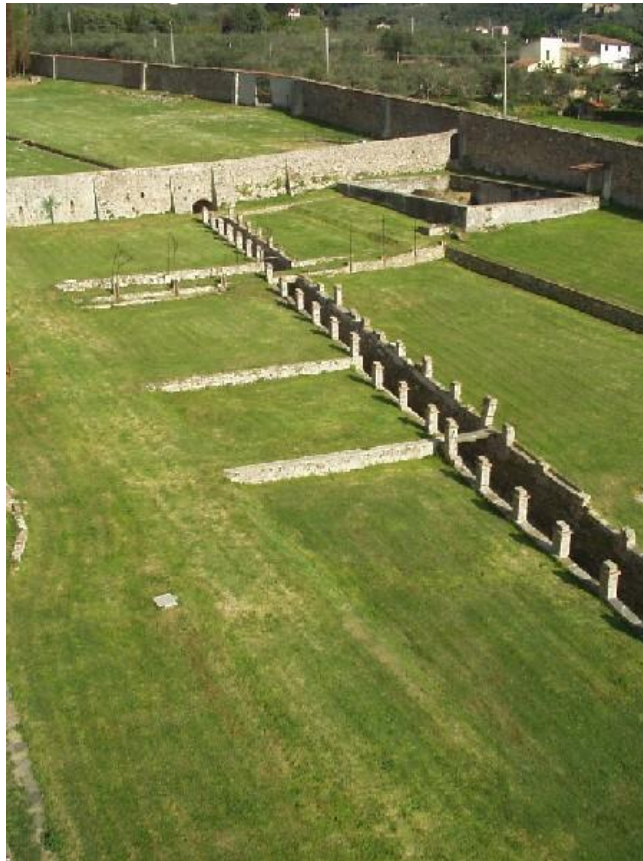


Information on buildings of primary importance and on the artefacts that are part of the composition of the green area.

Particularly significant buildings and artefacts will be catalogued with A norms, but should be mentioned in this paragraph with a brief description, compiling only the MDTU and MDTT subfields

# PG sheet – Paragraph IM HISTORICALLY SIGNIFICANT ENGINEERING SYSTEM

Acronym		Definition	LUN.	RIP.	OBB.	VOC.	VIS.
<b>IM</b>		<b>HISTORICALLY SIGNIFICANT ENGINEERING SYSTEMS</b>					
	IMP	PLUMBING, IRRIGATION SYSTEMS, ETC.		Yes			
	IMPU	Location	50			A	1
	IMPT	Type	50			A	1



Information about installations, technical systems of the original structure, technical systems created during later transformations/uses of the cultural property. Those systems must have historical interest.



Acronym			Definition	LUN.	RIP.	OBB.	VOC.	VIS.
<b>PV</b>			<b>FLOORINGS</b>					
	PVM		FLOORINGS		Yes			
		PVMU	Location	50			A	1
		PVMG	Category	50			A	1
		PVMS	Design	250	Yes		A	1



Information describing, from a morphological point of view, floorings with particular typological significance.

The floors with particular artistic value are catalogued with the OA norms, but should be mentioned in this paragraph with summary description.

Acronym		Definition	LUN.	RIP.	OBB.	VOC.	VIS.
<b>DE</b>		<b>DECORATIVE ELEMENTS</b>					
	DEC	DECORATIVE ELEMENTS		Yes			
	DECU	Location	50			A	1
	DECT	Type	50			A	1
	DECQ	Type variation	250			A	1
	DECM	Materials	250	Yes		A	1

**DE - ELEMENTI DECORATIVI**

**DEC - ELEMENTI DECORATIVI**

**DECU - Ubicazione**

viale

**DECT - Tipo**

scultura

**DECM - Materiali**

marmo bianco



Information about the presence of any decorative element and archaeological find that characterize the cultural property.

All the botanical decorative elements are excluded from the description.

Acronym				Definition	LUN.	RIP.	OBB.	VOC.	VIS.
<b>LI</b>				<b>INSCRIPTIONS, PLAQUES, ARMS</b>					
	LSI			INSCRIPTIONS, PLAQUES, ARMS		Yes			
		LSIU		Location	50			A	1
		LSIG		Category	10			C	1
		LSIT		Type	250				1
		LSII		Transcription	1000				1
		LSIC		Technique	15			A	1
		LSIM		Materials	250	Yes		A	1

**LSI - ISCRIZIONI, LAPIDI, STEMMI**

<b>LSIU - Ubicazione</b>	parco
<b>LSIG - Genere</b>	iscrizione
<b>LSIT - Tipo</b>	targa in metallo verniciato, apposta su albero, con iscrizione in stampatello in rilievo
<b>LSII - Trascrizione testo</b>	SOLDATO / COSSALE GIOVANNI / DI LUIGI / CLASSE 1897 / GUERRA 1915 1918



Information about tombstones, coats of arms or inscriptions that are significant for the building or the history of the building.

Such objects should be described briefly, since they are filed separately with the OA and RA sheets.



BRIENZA - Parco delle Rimembranze

**MC - METADATI DI CATALOGAZIONE****FTA - DOCUMENTAZIONE FOTOGRAFICA**

<b>FTAP - Tipo</b>	positivo b/n
<b>FTAC - Collocazione</b>	<a href="http://www.alberidellamemoria.beniculturali.it">http://www.alberidellamemoria.beniculturali.it</a>
<b>FTAN - Codice identificativo</b>	New_1486412360932
<b>FTAT - Note</b>	Nel Parco della Rimembranza furono messi a dimora tante piante di leccio (ed alcuni abeti) quanti erano i caduti burgentini della prima guerra mondiale

**MM - METADATI DATO MULTIMEDIALE****MMT - METADATI TECNICI DATO MULTIMEDIALE**

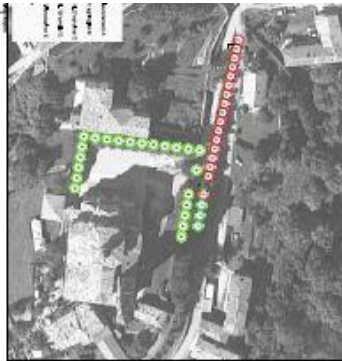
<b>MMTO - Nome file originale</b>	BRIENZA_foto2.jpg
-----------------------------------	-------------------

## Photographic documentation



## Graphic documentation

MC - METADATI DI CATALOGAZIONE	
DRA - DOCUMENTAZIONE GRAFICA	
DRAT - Tipo	rilievo
DRAN - Codice identificativo	New_1358963832647
MM - METADATI DATO MULTIMEDIALE	
MMD - DESCRIZIONE E CLASSIFICAZIONE	
MMDT - Descrizione documentazione grafica	planimetria quotata
MMT - METADATI TECNICI DATO MULTIMEDIALE	
MMTO - Nome file originale	planimetria quotata.tif

**MC - METADATI DI CATALOGAZIONE****DRA - DOCUMENTAZIONE GRAFICA**

DRAT - Tipo	planimetria
DRAO - Note	ricostruzione schematica della planimetria su foto aerea, con simbologia botanica
DRAS - Scala	1:500
DRAE - Ente proprietario	SBEAP AL
DRAC - Collocazione	Ufficio Catalogo
DRAN - Codice identificativo	SBEAPAL/AT_PM_002
DRAA - Autore	Vergano, Alice
DRAD - Data	2016/05/20

**MM - METADATI DATO MULTIMEDIALE****MMT - METADATI TECNICI DATO MULTIMEDIALE**

MMTO - Nome file originale	AT_PM_002.pdf
----------------------------	---------------

**Graphic documentation**

**MC - METADATI DI CATALOGAZIONE****DRA - DOCUMENTAZIONE GRAFICA**

<b>DRAT - Tipo</b>	estratto di mappa catastale
<b>DRAO - Note</b>	Perimetrazione del Parco
<b>DRAN - Codice identificativo</b>	New_1486412994455

**MM - METADATI DATO MULTIMEDIALE****MMT - METADATI TECNICI DATO MULTIMEDIALE**

<b>MMTO - Nome file originale</b>	BRIENZA_stralcioCatastale.pdf
-----------------------------------	-------------------------------

## Graphic documentation

DESCRIZIONE.

Situato in prossimità del Palazzo Orsini al di là della via del Lavato, il giardino è circondato per tre lati (nord, est e sud) da un alto muro e sul restante lato dal fondo delle abitazioni adiacenti intorno al palazzo Rinaldi- Terrisi, poi Rinaldi.

Sul muro, lungo la via del Lavato, si aprono, ad ovest, due finestre alla francese con inferriate e un portale (con portone in legno) in asse con quella del frontistato palazzo Orsini. Da questo portale si accede all'interno del giardino, dal lato nord due aperture ad arco in laterizio con inferriate, aprono verso la strada lo spazio del giardino. Uno è di forma semplice, pensola rettangolare con aiuola delimitata da violetti con diottoloni a "pillole di Pistoia"; i violetti girano intorno al perimetro murato e convergono poi verso il portale situato fuori asse e demarca rispetto all'ingresso. Nell'aiuola, a prato rasato, sono poste alcune coccie con fiori di stagione.

Alcuni alberi di alto fusto - in particolare sono da notare alcuni bella mogolia - particolarmente con varie forme e colori, a seconda della stagione, lo spazio mirato e contenuto del giardino.

Sul fondo est sono stati piantati degli arbusti di lauro a "nascondere" alcune irregolarità e incertezze architettoniche del retro prospetto degli edifici che vi sorgono. Lungo il resto del perimetro murato si sviluppano, avvolgendosi e sostenuti in ferro, dei rampicanti che sbocciano, oltre il muro, nella strada.

**MC - METADATI DI CATALOGAZIONE****FNT - FONTI E DOCUMENTI**

FNTP - Tipo	relazione storico artistica
FNTD - Data	1978
FNTN - Nome archivio	Archivio Catastale SBAPPSAELUMS
FNTS - Posizione	faldone n° 82
FNTI - Codice identificativo	New_1359797911447

**MM - METADATI DATO MULTIMEDIALE****MMD - DESCRIZIONE E CLASSIFICAZIONE**

MMDT - Descrizione documento	relazione storica
------------------------------	-------------------

**MMT - METADATI TECNICI DATO MULTIMEDIALE**

MMTO - Nome file originale	relazione.pdf
----------------------------	---------------

**Publications and documents**





**Visualizzazione cartografica (sola lettura)**

Menu

Google Maps Mappa Ente

TOC

TOC

Coord. e Scala di visual.

Google Base Layers

Lista livelli

SCHEDE

Google

Dati mappa ©2017 Google Immagini ©2017, DigitalGlobe Termini e condizioni d'uso Segnala un errore nella mappa



**Visualizzazione cartografica (sola lettura)**

Menu

Google Maps **Mappa Ente**

TOC

TOC

Coord. e Scala di visual.

**Lista livelli**

- SCHEDE
- LIMITI AMMINISTRATIVI ISTAT
- LISTA LIVELLI
  - Legenda ORTOFOTO 2006
  - Legenda Ortofoto a colori anno.
  - Legenda Ortofoto digitali, con pi