

- Methodologies for cataloguing cultural heritage
- Computerized cataloguing and multimedia documentation

***OA sheet for works  
and objects of art***

## WORKS AND OBJECTS OF ART

*Category: movable properties.*

*Study area: historical-artistic.*

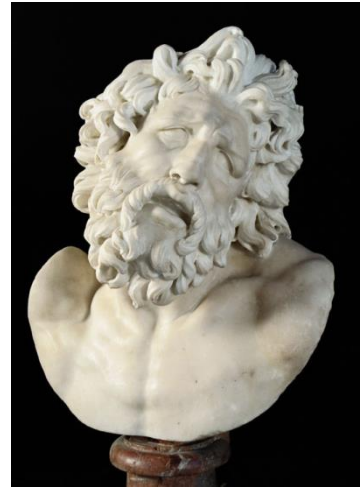
*Definition: parts of artistic, historical or religious monuments, or coming from the parting of the monuments.*

*Place of custody: museums, collections, gallery, outdoor spaces (gardens, squares, etc.).*

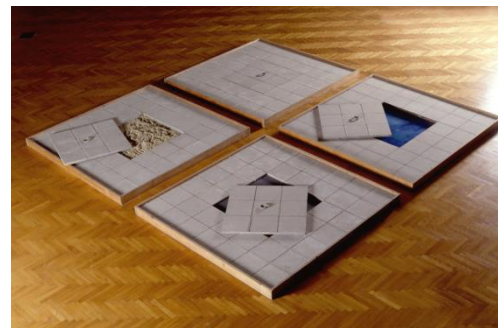
Painting



Sculptur



Object of daily use



Civil furnishings

## Instruments for OA cataloguing

NORM

3.00 VERSION

- Norm for compilation
- Data structure

TERMINOLOGICAL  
INSTRUMENTS

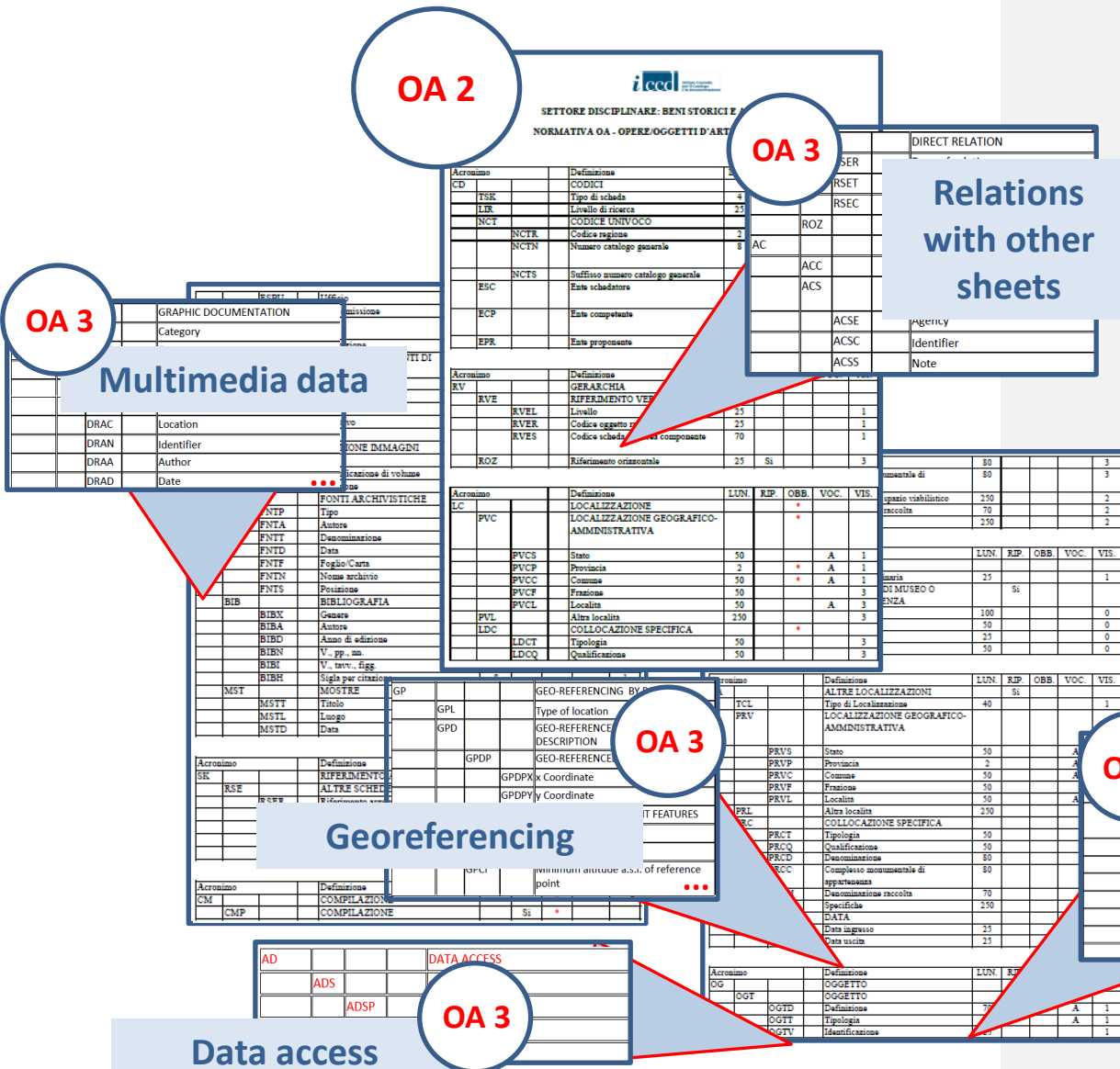
CONTROLLED LISTS  
OPEN VOCABULARIES

- Thesauri
- Authority file

ATTACHED  
DOCUMENTATION

MULTIMEDIA  
DOCUMENTATION

- Digital photographs
- Archival documents
- Audio file
- CAD
- ...



3.00 version is the result of an updating process of the cataloguing methodology, following the introduction of computer technology.

The digitization of paper sheets, promoted by the Institute since 90's, and the serious consideration of the complexity and richness of cultural properties have led to the updating process of norms.

## Step of cataloguing development

### 1. Scientific

From norms available for only three classes of property to a version integrated with geographic, relational and documental contents

OA-D-N

70's

OA 2

90's

OA 3

2014

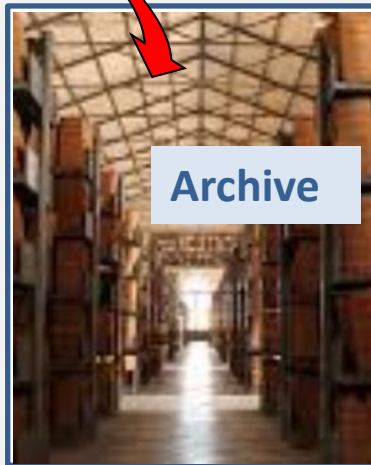
In use

...

### 2. Technological

From a transcription and preservation of information on physical supports to virtual digitization, preservation and promotion.

**Paper sheet**



**Sigecweb**

OGGETTO	croce processionale
Localizzazione	Firenze (FI), FIRENZE, Via della Gaieta 4
TAO scheda	OA 3.00
Codice univoco	09 0010059
OGGETTO	croce processionale
Localizzazione	Firenze (FI), Petrosi, via S. Biagio a Petrosi
TAO scheda	OA 3.00
Codice univoco	09 0029152
OGGETTO	croce processionale
Localizzazione	Firenze (FI), Petrosi, via S. Biagio a Petrosi
TAO scheda	OA 3.00
Codice univoco	09 0029152

**On-line data**

	PVCC	Municipality	50	*	C	1
	PVCL	Locality	50		C	3
	PVCE	Other administrative subdivision or foreign location	250			3

Acronym	Definition	LEN.	REP.	OBL.	VOC.	VIS.
AC	OTHER IDENTIFIERS					
ACC	Other property identifier	25	Yes			
ACS	RELATED RECORD		Yes			
ACSE	Agency	25		(*)		1
ACSC	Identifier	25		(*)		1

Acronym	Definition	LEN.	REP.	OBL.	VOC.	VIS.
CD	IDENTIFIERS					
TSK	Sheet type					
LIR	Accuracy					
NCT	UNIQUE IDENTIFIER					
NCTR	Region Identifier					
NCTN	ICCD Number				assigned by ICCD	
NCTS	Suffix	2				1
ESC	Cataloguing agency	25		*	code assigned by ICCD	1
ECP	Heritage Protection Agency	25		*	code assigned by ICCD	1
EPR	Proponent Agency	25				1

Acronym	Definition	LEN.	REP.	OBL.	VOC.	VIS.
RV	RELATIONS					
RVE	COMPLEX STRUCTURE					
RVEL	Level	25		(*)		1
RVER	Root property identifier	25				1
RVES	Component property identifier	25	Yes			1
RSE	DIRECT RELATION		Yes			
RSER	Type of relation	70		(*)	C	1
RSET	Sheet type	10		(*)	C	1
RSEC	Unique identifier	25		(*)		3
ROZ	Other relations	25	Yes			3

Cluster of information "Paragraph"

sections "simple fields, structured fields"

"subfields"

Catalogue sheet is a descriptive model to gather information on cultural properties in homogeneous and established way.

Data structure is made up by clusters of information, that gather sections for the identification of specific attributes of the property.



## Type of contents

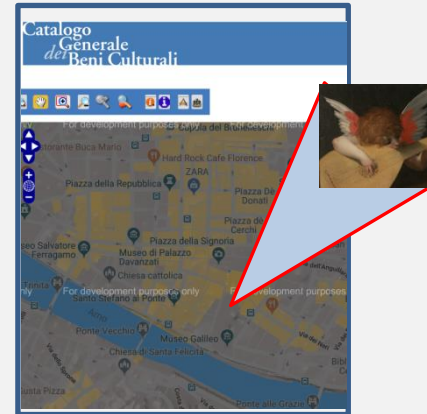
### Administrative

CD – Identifier  
 AC – other Id  
 RV - Relations  
 UB – Location and ownership  
 CM - Compilation

CD - CODICI	
TSK - Tipo Scheda	OA
LIR - Livello ricerca	C
NCT - CODICE UNIVOCO	
NCTR - Codice regione	09
NCTN - Numero catalogo generale	00099772
ESC - Ente sc	
ECP - Ente co	

CM - COMPILAZIONE	
CMP - COMPILAZIONE	
CMPD - Data	1978
CMPN - Nome	Abruzzo V.
FUR - Funzionario responsabile	Damiani G.
RVM - TRASCRIZIONE PER INFORMATIZZAZIONE	
RVMD - Data	1987
RVMN - Nome	Rensi A.



### Geographic

LC – Geographic-admin. location  
 LA – other geographic-admin. location  
 GP – Georeferencing

### Descriptive

OG - Object  
 DA – Analytical data  
 RO - Relationship  
 DT – Dating

DA - DATI ANALITICI	
DES - DESCRIZIONE	
DESO - Indicazioni sull'oggetto	NR (recupero pregresso)
DESI - Codifica Iconclass	11 G 21
DESS - Indicazioni sul soggetto	Figure: angelo. Oggetti: liuto.

OG - OGGETTO	
OGT - OGGETTO	
OGTD - Definizione	dipinto
SGT - SOGGETTO	
SGTI - Identificazione	angelo musicante

MT - DATI TECNICI	
MTC - Materia e tecnica	tavola/ pittura a olio
MIS - MISURE	
MISU - Unita'	cm
MISA - Altezza	39
MISL - Larghezza	47
CO - CONSERVAZIONE	
STC - STATO DI CONSERVAZIONE	
STCC - Stato di conservazione	buono
RS - RESTAURI	
RST - RESTAURI	
RSTD - Data	2000

### Technical

RE - Investigation  
 MT – Technical data  
 CO - Preservation  
 RS - Restorations

### Juridical

TU – Legal status and restrictions  
 AD – Data access

TU - CONDIZIONE GIURIDICA E VINCOLI	
CDG - CONDIZIONE GIURIDICA	
CDGG - Indicazione generica	proprietà Stato
CDGS - Indicazione specifica	Ministero per i Beni e le Attività Culturali

AU - DEFINIZIONE CULTURALE	
AUT - AUTORE	
AUTM - Motivazione dell'attribuzione	bibliografia
AUTN - Nome scelto	Rosso Fiorentino
AUTA - Dati anagrafici	1495/ 1540
AUTH - Sigla per citazione	00000928

### Documental

AU – Cultural information  
 DO – Reference sources and documents

## Administrative data

➤ CD – Identifier

Registration of data identifying cultural property at a national level

➤ AC – other Id

Registration of other identifiers, assigned by different agencies from ICCD

➤ RV - Relations

Registration of information about relations with other cultural properties (complex property –direct/inverse relations)

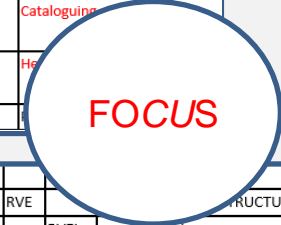
➤ UB – Location...

Registration of inventory, patrimonial and economic data

➤ CM - Compilation

Registration of information about the first compilation of the sheet and its following modifications

CD			IDENTIFIERS
	TSK		Sheet type
	LIR		Accuracy
	NCT		UNIQUE IDENTIFIER
		NCTR	Region Identifier
		NCTN	ICCD Number
		NCTS	Suffix
	ESC		Cataloguing
	ECP		He
	EPR		



RV			
	RVE		STRUCTURE
	RVEL		Level
	RVER		Root property identifier
	RVES		Component property identifier
	RSE		DIRECT RELATION
	RSER		Type of relation
	RSET		Sheet type
	RSEC		Unique Identifier
	ROZ		Other relations

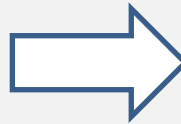


## DATA STRUCTURE



### CD - IDENTIFIERS

CD			IDENTIFIERS
●	TSK		Sheet type
●	LIR		Accuracy
	NCT		UNIQUE IDENTIFIER
	NCTR		Region Identifier
	NCTN		ICCD Number
	NCTS		Suffix
	ESC		Cataloguing agency
	ECP		Heritage Protection Agency
	EPR		Proponent Agency



## SIGECWEB



### Observations

- Management of National register of NCTN has been digitizing thanks to Sigecweb platform
- NCT = NCTR+NCTN i.e. 1200004444

mandatory fields

authority files ●

closed/open list ●

digital entity ●

## DATA STRUCTURE



## SIGECWEB



### RV - RELATIONS

RV			RELATIONS
	RVE		COMPLEX STRUCTURE
		RVEL	Level
		RVER	Root property identifier
		RVES	Component property identifier
	RSE		DIRECT RELATION
	●	RSER	Type of relation
	●	RSET	Sheet type
		RSEC	Unique Identifier
		ROZ	Other relations

Parent/child relation

Direct relation

### Observation

Thanks to NCTN identifier, Sigecweb automatically creates the link (**inverse relation**) with its container

mandatory fields

authority files ●

closed/open list ●

digital entity ●

## Descriptive data

### ➤ OG - Object

It collects data for a precise identification of cultural property, from a typological, terminological and morphological point of view

### ➤ DA – Analytical data

Descriptive information of the cultural property (general and detailed information)

### ➤ RO - Relationship

Registration of information about relationships between catalogued property and the property from which it is derived or of which it is a preparation

### ➤ DT - Dating

Information about chronology of the property

OG				OBJECT
	OGT			OBJECT
		OGTD		Definition
		OGTT		Type
		OGTV		Identification
		OGTN		Name/dedication
		OGTP		Position
	QNT	DA		
	QN		DES	
	QN			DESO
	SGT			DESI
		SGT		DESS
		SGT		ISR
				INSCRIPTIONS
				ISRC
				ISRL
				ISRS
				ISRT
				ISRP
				ISRA
				ISRI
				STM
				STMC
				STMQ
				STMI
				STMU
				STMP
				STMD
				NSC
				COAT OF ARMS, EMBLEMS, MARKS
				Class
				Language
				Inscription technique
				Type of character
				Position
				Author
				Transcription
				Class
				Qualifier
				Identification
				Quantity
				Position
				Description
				Historical-critical information

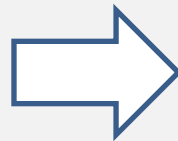
**FOCUS**

## DATA STRUCTURE

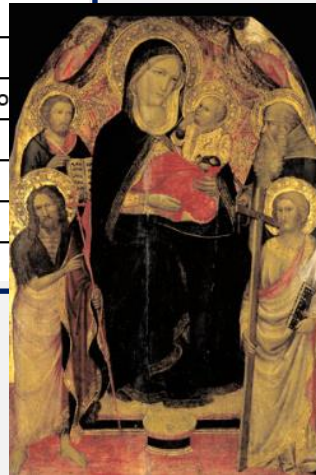


### OG - OBJECT

OG			OBJECT
	OGT		OBJECT
●	OGTD		Definition
●	OGTT		Type
●	OGTV		Identification
	OGTN		Name/dedication
	OGTP		Position
	QNT		QUANTITY
	QNTN		Number of Samples/Compo
●	QNTS		Undetected Quantity
	SGT		SUBJECT
	SGTI		Identification
	SGTT		Title



## SIGECWEB

Termine	Livello
* centro tavola	1
* coltello da tavola	1
* portapipe da tavola	1
* <b>tavola</b>	1
* tavolaccio	1
* tavola per i pani benedetti	1
* tavola per le offerte	1
* trionfo da tavola	1
* tavola di refettorio	1

mandatory fields

authority files ●

closed/open list ●

digital entity ●

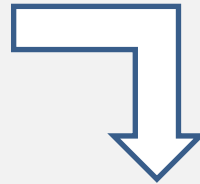
Open vocabulary

## DATA STRUCTURE

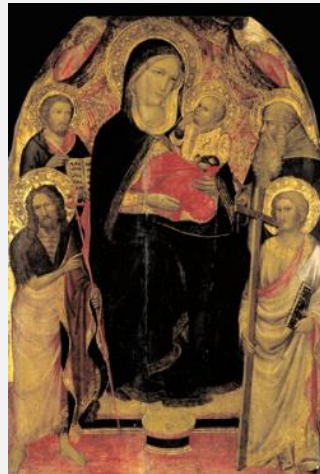


### DA – Analytical data

DA				ANALYTICAL DATA
	DES			DESCRIPTION
		DESO		Object information
		DESI		Iconclass identifier
		DESS		Subject information



## SIGECWEB



**DA - DATI ANALITICI**

- \* **DES - DESCRIZIONE**
  - DESO - Indicazioni sull'oggetto
 

tavola lignea, formato cuspidato, la parte superiore risulta tagliata
- \* **DESI - Codifica Iconclass**
  - DESI(1)
 

11F611 : 11H(Giovanni Battista) : 11H(Andrea)
- \* **DESS - Indicazioni sul soggetto**
  - DESS(1)
 

Personaggi: Maddona; Gesù Bambino; San Giovanni Battista; Sant'Andrea; San Giovanni Evangelista; Sant'Antonio Abate.

mandatory fields

authority files ●

closed/open list ●

digital entity ●

## Geographic data

➤ LC – Geographic-administrative location

It gathers information about geographic-administrative location of the property

➤ LA – other geographic-administrative location

Information about previous locations of the property

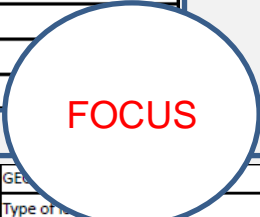
➤ GP – Georeferencing

Geographic or projected coordinates to register the position of the property on the territory

LC				GEOGRAPHIC-ADMINISTRATIVE LOCATION
	PVC			CURRENT LOCATION
		PVCS		Nation
		PVCR		Region
		PVCP		Province

GP				GEO-REFERENCED POINT
	GPL			Type of point
	GPD			GEO-REFERENCED POINT DESCRIPTION
		GDPD		GEO-REFERENCED POINT
			GDPDX	x Coordinate
			GDPDY	y Coordinate
	GPC			GEO-REFERENCED POINT FEATURES
		GPCT		Type
		GPCL		Altitude a.s.l.
		GPCI		Minimum altitude a.s.l. of reference point



DATA STRUCTURE



LC – GEOGRAPHIC ADMIN. LOCATION

LC		GEOGRAPHIC-ADMINISTRATIVE LOCATION
	PVC	CURRENT LOCATION
	● PVC	Nation
	● PVCR	Region
	● PVCP	Province
	● PVCC	Municipality
	PVCL	Locality
	PVCE	Other administrative subdivision or foreign location
	PVL	Other toponym
	PVE	Diocese
	LDC	SPECIFIC LOCATION
	LDCT	Physical Container Type
	LDCQ	Physical Container Qualifier
	LDCN	Physical Container Name
	LDCC	Monumental complex
	LDCU	Address/Directions
	LDCM	Juridical Container Name
	LDCS	Details

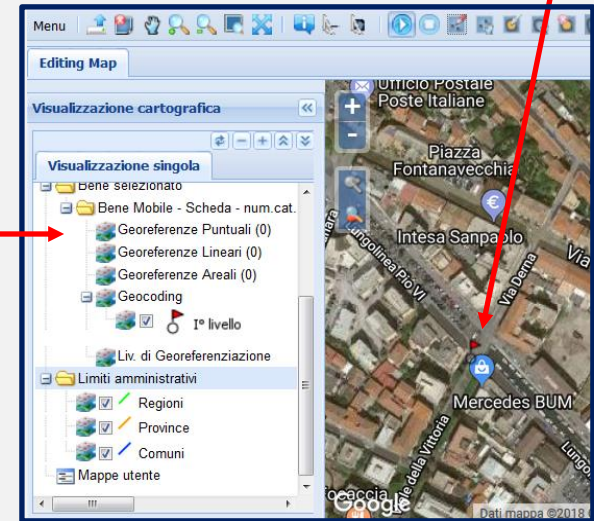
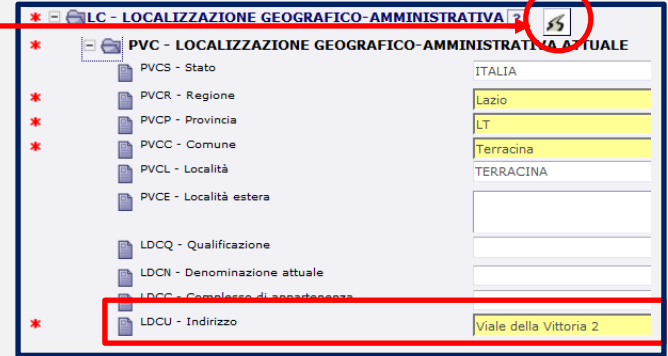
Geocoding

GP – GEO REFERENCING BY POINT

GP		GEO-REFERENCING BY POINT
GPL		Type of location
GPD		GEO-REFERENCED POINT DESCRIPTION
GPDP		GEO-REFERENCED POINT
	GPDPX	x Coordinate
	GPDPY	y Coordinate
GPC		GEO-REFERENCED POINT FEATURES
	GPCT	Type
	GPCL	Altitude a.s.l.
	GPCI	Minimum altitude a.s.l. of reference point
	GPCS	Maximum altitude a.s.l. of reference point
	GPM	Georeferencing method
	GPT	Georeferencing technique
	GPP	Projection and Reference system
	GPB	MAP BASE

WebGis

SIGECWEB



mandatory fields

authority files



closed/open list



digital entity





## Technical data

➤ RE - Investigation

It gathers information about survey which has allowed the finding of the cultural property

➤ MT – Technical data

It gathers information about material and technique of the cultural property and its size

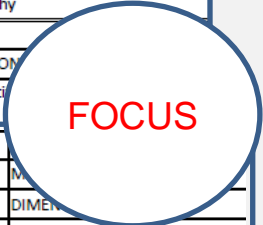
➤ CO – Preservation

It gathers information about preservation status of cultural property

➤ RS - Restoration

It gathers information about restorations of the cultural property

RE			INVESTIGATION
	RCG		SURVEYS
		RCGU	Soil use
		RCGC	Visibility conditions
		NCUN	ICCD identifier
		RCGA	Scientific director
		RCGE	Reason
		RCGM	Method
		RCGD	Date
		RCGH	Local identifier
		RCGS	Bibliography
		RCGZ	Details
	DSC		EXCAVATION
		NCUN	ICCD identifier
	MT		
		MTC	Material
		MIS	DIMENSIONS
		MISU	Unit of Measurement
		MISA	Height
		MISL	Width
		MISP	Depth
		MISD	Diameter
		MISN	Length
		MISS	Thickness
		MISG	Weight
		MISV	Other measurement
		MISR	Undetected measurement
		MIST	Validity
		FIL	Filigree
		FRM	Format



DATA STRUCTURE



RE - INVESTIGATION

RE			INVESTIGATION
	RCG		SURVEYS
	●	RCGU	Soil use
	●	RCGC	Visibility conditions
		NCUN	ICCD identifier
		RCGA	Scientific director
	●	RCGE	Reason
	●	RCGM	Method
		RCGD	Date
		RCGH	Local identifier
		RCGS	Bibliography
		RCGZ	Details

SIGECWEB



RE - MODALITA' DI REPERIMENTO ?

- RCG - RICOGNIZIONI
  - RCGU - Uso del suolo: urbanizzato
  - RCGC - Condizioni di visibilità: [ ]
  - NCUN - Codice univoco ICCD: [ ]
  - RCGA - Responsabile scientifico
    - RCGE - Motivo: indagine territoriale
    - RCGM - Metodo: sistematico
    - RCGD - Data: 1999/10/10
    - RCGH - Sigla per citazione: RCGTEST1

RCG 3.00 RCGTEST1:

- CD - CODICI ?
  - TSK - Tipo scheda: RCG
  - NCU - CODICE UNIVOCO ICCD: TEST01
  - ESC - Ente schedatore: TEST01
  - ECP - Ente competente: TEST01
- LC - LOCALIZZAZIONE GEOGRAFICO-AMMINISTRATIVA ?
- CS - LOCALIZZAZIONE CATASTALE ?
- GP - GEOREFERENCEZZIONE TRAMITE PUNTO ?
- GA - GEOREFERENCEZZIONE TRAMITE AREA ?
- RG - DATI SULLA RICOGNIZIONE ?
  - RCG - RICOGNIZIONE
    - RCGR - Ente responsabile: [ ]
    - RCGF - Ente finanziatore: [ ]
    - RCGA - Responsabile scientifico
      - RCGE - Motivo: [ ]
      - RCGM - Metodo: [ ]
      - RCGD - Data: 1999/10/10
    - RCGB - Bibliografia: [ ]
    - RCGH - Sigla per citazione: RCGTEST1

Authority files

Sheet

mandatory fields

authority files ●

list closed/open ●

digital entity ●

## DATA STRUCTURE



### MT – Technical data

MT			TECHNICAL DATA
●	MTC		Material and technique
	MIS		DIMENSIONS
●		MISU	Unit of Measurement
		MISA	Height
		MISL	Width
		MISP	Depth
		MISD	Diameter
		MISN	Length
		MISS	Thickness
		MISG	Weight
		MISV	Other measurement
●		MISR	Undetected measurement
		MIST	Validity

Termini	
*	intonaco staccato/ applicazione su tavola
*	tavola
*	tavola/ acquerellatura
*	tavola/ applicazione
*	tavola/ argentatura a foglia
*	tavola/ bistro
*	tavola/ carboncino
*	tavola/ cementite

Open vocabulary

## SIGECWEB



MT - DATI TECNICI ?

- MTC - Materia e tecnica
  - MTC(1) tela/ pittura a tempera
- MIS - MISURE
  - MISU - Unità cm
  - MISA - Altezza 160
  - MISL - Larghezza 120
  - MISP - Profondità
  - MISD - Diametro
  - MISN - Lunghezza
  - MISS - Spessore
  - MISG - Peso

MT - DATI TECNICI ?

- MTC - Materia e tecnica
  - MTC(1) tela/ pittura a tempera
- MIS - MISURE
  - MISU - Unità UNR
  - MISA - Altezza
  - MISL - Larghezza
  - MISP - Profondità
  - MISD - Diametro
  - MISN - Lunghezza
  - MISS - Spessore
  - MISG - Peso
  - MISV - Varie
    - MISV(1)
  - MISR - Mancanza MNR

### Observations

Sigecweb provides for a formal control of the compilation of MISU/MISR fields, as stated by the norm:

- if MISR = MNR (Undetected)
- so MISU = UNR (Undetected)

- mandatory fields
- list closed/open
- authority files
- digital entity

## Documental data

### ➤ AU – Cultural Information

It gathers information about author or about cultural environment, if the author is unknown

### ➤ DO – Reference sources and documents

It gathers information about photographic, graphic, archival, bibliographic and audio documentation

DO			REFERENCE SOURCES AND DOCUMENTS
	FTA		PHOTOGRAPHIC DOCUMENTATION
		FTAX	Category
		FTAP	Type
		FTAA	Author
		FTAD	Date
		FTAE	Owner
AU			CULTURAL DEFINITION
	AUT		AUTHOR
		AUTS	Type of connection
		AUTR	Role
		AUTM	Source for attribution
		NCUN	ICCD identifier
		AUTN	Name
		AUTA	Birth/death details
		AUTH	Local Identifier
		AUTB	Collective body/chosen name
ATB			CULTURAL CONTEXT
		ATBD	Name
		ATBR	Type of intervention
		ATBM	Source for attribution
AAT			Other attribution
EDT			PUBLISHER/PRINTER
		EDTZ	Mint
		EDTA	Authority
		EDTN	Name
CMM			COMMISSIONER OF THE OBJECT
		CMMN	Name
		CMMD	Date
		CMMC	Circumstances
		CMMF	Source

FOCUS

DATA STRUCTURE

SIGECWEB



**AUT 3.00 AUTTEST2: Taddeo di Bartolo**

- TSK - Tipo scheda
- NCUI - CODICE UNIVOCO ICCD
- ESC - Ente schedatore
- ECP - Ente competente
- AU - AUTORE ?
  - AUT - AUTORE
    - AUTN - Nome scelto
    - AUTA - Dati anagrafici
    - AUTC - Cognome
    - AUTO - Nome
    - AUTP - Pseudonimo
    - AUTE - Nome convenzionale
    - AUTF - Monogramma, firma
    - AUTV - Varianti
    - AUTZ - Sesso
    - AUTL - Luogo di nascita
    - AUTO - Data di nascita

**AU - DEFINIZIONE CULTURALE ?**

- 1 - AUT - AUTORE
  - AUTS - Riferimento all'autore
  - AUTR - Riferimento all'intervento
  - AUTM - Motivazione dell'attribuzione
    - AUTM(1)
  - NCUN - Codice univoco ICCD
  - AUTN - Nome scelto
  - AUTA - Dati anagrafici
  - AUTH - Sigla per citazione

AU – Cultural information

AU		CULTURAL DEFINITION
	AUT	AUTHOR
	● AUTS	Type of connection
	● AUTR	Role
	● AUTM	Source for attribution
	NCUN	ICCD identifier
	AUTN	Name
	AUTA	Birth/death details
	● AUTH	Local Identifier
	AUTB	Collective body/chosen name
	ATB	CULTURAL CONTEXT
	● ATBD	Name
	● ATBR	Type of intervention
	● ATBM	Source for attribution
	AAT	Other attribution

Authority file

Option 1

Alternative absolute obligation

Option 2

**ATB - AMBITO CULTURALE**

- 1 - ATB(1)
  - ATBD - Denominazione
  - ATBR - Riferimento all'intervento
  - ATBM - Motivazione dell'attribuzione
    - ATBM(1)

mandatory fields

authority files ●

list closed/open ●

digital entity ●

## DATA STRUCTURE



### DO – Reference sources and document

DO			REFERENCE SOURCES AND DOCUMENTS
	FTA		PHOTOGRAPHIC DOCUMENTATION
	● FTAX		Category
	● FTAP		Type
		FTAA	Author
		FTAD	Date
		FTAE	Owner
		FTAC	Location
	● FTAN		Identifier
		FTAT	Note
		FTAF	Format

## SIGECWEB



FTA - Genere	documentazione allegata
FTA - Tipo	fotografia digitale (file)
FTAA - Autore	Rossi, Maria
FTAD - Data	1944/10/10
FTAE - Ente proprietario	
FTAC - Collocazione	
FTAN - Codice identificativo	FTATEST01
FTAT - Note	
FTAF - Formato	



Multimedia documentation

MMT - Nome file originale	Madonna con bambino e santi.jpg
---------------------------	---------------------------------

Sheet

mandatory fields

authority files

list closed/open

digital entity



## Juridical data

### ➤ TU – Legal status and restrictions

In this paragraph information about acquisition, legal status, provisions for protection of the property are registered.

### ➤ AD – Data access

Specific information about the access profile and the reason why that access profile has been chosen. It also gathers information about expiration date of restrictions, to allow a complete access of the information about the property.

AD			DATA ACCESS
	ADS		SPECIFICATIONS
		ADSP	Access profile
		ADSM	Reason
		ADSD	Expiration Date

FOCUS

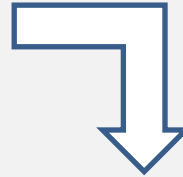


## DATA STRUCTURE



### AD – Data access

AD			DATA ACCESS
	ADS		SPECIFICATIONS
	● ADSP		Access profile
	● ADSM		Reason
		ADSD	Expiration Date



## SIGECWEB



\* - AD - ACCESSO AI DATI ?

- \* - ADS - SPECIFICHE DI ACCESSO AI DATI
  - \* ADSP - Profilo di accesso
  - \* ADSM - Motivazione
  - \* ADSD - Indicazioni sulla data di scadenza

## Observations

The visibility of sheet content is managed in AD paragraph, where the level of availability of information is registered. Visibility level are 3:

- Level 1: low privacy = freely accessible
- Level 2: medium privacy = partially accessible
- Level 3: high privacy = not accessible

mandatory fields

authority files ●

list closed/open ●

digital entity ●

- *Compilation procedure*
- *Terminological instruments:*
  - *vocabularies and authority files*
  - *DESI – DESS: specifications*
- *Relations between Analytical data and Object*

## In-depth analysis

# Compilation procedure

Guided

Free

* AU - DEFINIZIONE CULTURALE ?		
* 1	AUT - AUTORE	
	AUT(1)	
	AUTS - Riferimento all'autore	attribuito
	AUTR - Riferimento all'intervento	
(*)	AUTM - Motivazione dell'attribuzione	
	AUTM(1)	analisi stilistica
	NCUN - Codice univoco ICCD	
(*)	AUTN - Nome scelto	Taddeo di Bartolo
(*)	AUTA - Dati anagrafici	1362 ca./ 1422 ca.
	AUTH - Sigla per citazione	AUTTEST2
	NCNICI ?	
	Materia e tecnica	tela/ pittura a tempera
	MISURE	cm
	MIS(1)	160
* 2	MISA - Altezza	120
* 2	MISL - Larghezza	
* 2	MISP - Profondità	
* 2	MISD - Diametro	
* 2	MISN - Lunghezza	
* 2	MISS - Spessore	
* 2	MISG - Peso	

Authority file

Syntactical and editorial rule

Terminological list, increasable

Closed terminological list

Length of the field

# Compilation procedure

## DATA STRUCTURE



Acronym	Definition	LEN.	REP.	OBL.	VOC.
OG	OBJECT			*	
OGT	OBJECT			*	
OGTD	Definition	70		*	A
OGTT	Type	70			A
OGTV	Identification	25			C
OGTN	Name/dedication	100			
OGTP	Position	50			
QNT	QUANTITY				
QNTN	Number of Samples/Components	3			
QNTS	Undetected Quantity	3			C
SGT	SUBJECT				
SGTI	Identification	250	Yes	(*)	
SGTT	Title	250	Yes		

## SIGECWEB



The screenshot shows the 'OG - OGGETTO' section of the SIGECWEB interface. It includes a tree view on the left with categories like 'OGT - OGGETTO', 'QNT - QUANTITA'', and 'SGT - SOGGETTO'. The main area shows a form for 'OG - OGGETTO' with fields for 'tavola', 'opera isolata', and 'Madonna con Bambino e Santi'. A red box highlights the 'Madonna con Bambino e Santi' field, with an arrow pointing to the 'Length of the field' label.

Open vocabulary

Closed vocabulary

Length of the field

Acronym	Definition	LEN.	REP.	OBL.	VOC.
AU	CULTURAL DEFINITION			*	
AUT	AUTHOR		Yes	*1	
AUTS	Type of connection	50			C
AUTR	Role	50			A
AUTM	Source for attribution	50	Yes	(*)	C
NCUN	ICCD identifier	8			code assigned by ICCD
AUTN	Name	100		(*)	
AUTA	Birth/death details	70		(*)	
AUTH	Local Identifier	8		(*)	

The screenshot shows the 'AU - DEFINIZIONE CULTURALE' section of the SIGECWEB interface. It includes a tree view on the left with categories like 'AUT - AUTORE' and 'AUTM - Motivazione dell'attribuzione'. The main area shows a form for 'AUT - AUTORE' with fields for 'attributo', 'analisi stilistica', 'Taddeo di Bartolo', '1362 ca./ 1422 ca.', and 'AUTTEST2'. A red box highlights the '1362 ca./ 1422 ca.' field, with an arrow pointing to the 'Syntactical rule' label.

Syntactical rule

Authority file

Free

Guided

# Guided compilation: examples in Sigecweb

## Simple list

OGTV

Termine	
* ciclo	
* complesso decorativo	
* coppia	
* elemento d'insieme	
* frammento	
* insieme	
* opera isolata	
* paio	
* pendant	
* serie	

## Related list

OGTD  
OGTT

Termine	Livello	Term
* + <u>dipinto</u>	1	
* <u>dipinto murale</u>	1	
* <u>dipinto murale staccato</u>	1	
* <u>dipinto murale</u>	1	
* <u>dipinto murale</u>	1	
* <u>dipinto murale staccato</u>	1	
* <u>dipinto murale</u>	1	
* <u>dipinto murale</u>	1	

Selezione:  dipinto

Termine	
* <u>scomparto di polittico</u>	
* <u>dipinto murale</u>	

## Authority file

AUT

CD - CODICI	
<b>TSK - Tipo scheda</b>	AUT
<b>ESC - Ente schedatore</b>	TEST01
<b>ECP - Ente competente</b>	TEST01
AU - AUTORE	
AUT - AUTORE	
<b>AUTN - Nome scelto</b>	Taddeo di Bartolo
<b>AUTA - Dati anagrafici</b>	1362 ca./ 1422 ca.
<b>AUTO - Nome</b>	Taddeo
<b>AUTV - Varianti</b>	Taddeo di Bartolo di Mino
<b>AUTZ - Sesso</b>	M
<b>AUTL - Luogo di nascita</b>	Siena
<b>AUTD - Data di nascita</b>	1362 ca.
<b>AUTX - Luogo di morte</b>	Siena
<b>AUTT - Data di morte</b>	1422 ca.
<b>AUTU - Scuola di appartenenza</b>	scuola senese
<b>AUTQ - Qualifica</b>	pittore
<b>AUTH - Sigla per citazione</b>	AUTTEST2
CM - COMPILAZIONE	
CMP - COMPILAZIONE	
<b>CMPD - Data</b>	2012
<b>CMPN - Nome</b>	Capretti, Elena
<b>RSR - Referente scientifico</b>	Gabrielli, Edith
<b>FUR - Funzionario responsabile</b>	Caldera, Massimiliano

## DESI – DESS: compilation

DESI

[www.iconclass.nl](http://www.iconclass.nl) **Iconclass**

Outline · Edits · Clipboard

**Outline of the Iconclass system**

**The 10 main categories**

- 0 · Abstract, Non-representational Art
- 1 · Religion and Magic
- 2 · Nature
- 3 · Human Being, Man in General
- 4 · Society, Civilization, Culture
- 5 · Abstract Ideas and Concepts
- 6 · History
- 7 · Bible
- 8 · Literature
- 9 · Classical Mythology and Ancient History

0 Abstract, Non-representational Art  
 1 Religion and Magic  
 11 Christian religion  
 11F the Virgin Mary  
 11F6 Madonna (i.e. Mary with the Christ-child) accompan  
 11F61 Madonna accompanied by saint(s)

11F611 'Sacra Conversazione'  
 Christian religion · Conversatione · Madonna (Mary with Christ-child) · Mary (Virgin) · Sacra  
 Conversazione · accompanying · conversation · group · religion · sacred · saint ·  
 supernatural · surrounding

DESI - Codifica Iconclass

DESI(1)

11F611 : 11H(Giovanni Battista) : 11H(Andrea)

DESS

**Compilation procedure: free**

**Restrictions: syntactical criteria  
length of the field**

DESS - Indicazioni sul soggetto

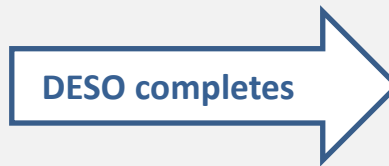
DESS(1)

Personaggi: Maddonna; Gesù  
 Bambino; San Giovanni Battista;  
 Sant'Andrea; San Giovanni  
 Evangelista; Sant'Antonio Abate.

DA-OG correlation

DA – ANALYTICAL DATA

DES			DESCRIPTION
	DESO		Object information
<b>DESO</b> Morphological identification of the property			



OG - OBJECT

OGT			OBJECT
	OGTD		Definition
	OGTT		Type
	OGTV		Identification
	OGTN		Name/dedication
	OGTP		Position
<b>OGT</b> Terminological and typological identification of the property			



	DESI		Iconclass identifier
	DESS		Subject information
<b>DESI</b> alphanumeric code of main iconographic themes			
<b>DESS</b> specifications of every part of the iconographic element			

SGT			SUBJECT
	SGTI		Identification
	SGTT		Title
<b>SGT</b> Summary information about the subject of the property			